

Product datasheet for **TA326701**

GRK6 Rabbit Polyclonal Antibody

Product data:

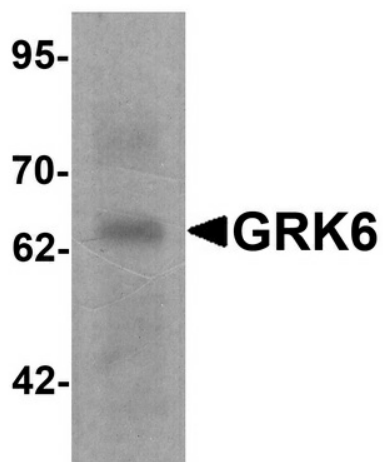
Product Type:	Primary Antibodies
Applications:	IF, IHC, WB
Recommended Dilution:	WB: 1 - 2 ug/mL, ICC: 5 ug/mL, IF: 20 ug/mL
Reactivity:	Human, Mouse, Rat
Host:	Rabbit
Isotype:	IgG
Clonality:	Polyclonal
Immunogen:	GRK6 antibody was raised against a 19 amino acid peptide near the carboxy terminus of human GRK6.
Formulation:	GRK6 antibody is supplied in PBS containing 0.02% sodium azide.
Concentration:	1 mg/ml
Purification:	GRK6 antibody is affinity chromatography purified via peptide column.
Conjugation:	Unconjugated
Storage:	Store at -20°C as received.
Stability:	Stable for 12 months from date of receipt.
Predicted Protein Size:	Predicted: 63 kDa; Observed: 63 kDa
Gene Name:	G protein-coupled receptor kinase 6
Database Link:	NP_001004106 Entrez Gene 2870 Human P43250
Background:	The G protein-coupled receptor kinases (GRKs) are a versatile family of kinases that play a critical role in cancer metastasis through their regulation of G-protein coupled receptors (GPCRs) involved in growth factor mediated cell migration (1,2). Phosphorylation of receptors by GRKs appears to be strictly dependent on the receptor being in its agonist-activated state (1). GRK6 is one of 7 members of the GRK serine/threonine kinase subfamily, which has been shown to modulate the Wnt signaling pathway via phosphorylation of LRP6 (3,4), and the insulin-like growth factor signaling pathway (4). GRK6 may also play a role in immune system function (5).



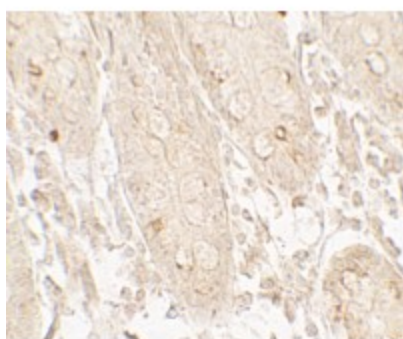
[View online »](#)

Synonyms: GPRK6

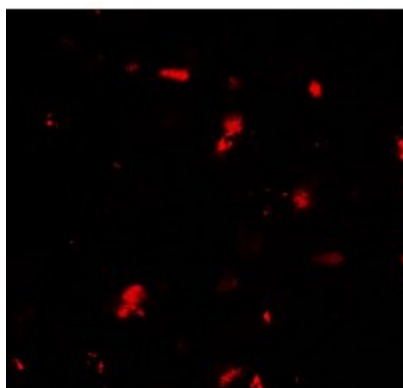
Product images:



Western blot analysis of GRK6 in rat small intestine tissue lysate with GRK6 antibody at 1 ug/ml.



Immunohistochemistry of GRK6 in human small intestine tissue with GRK6 antibody at 5 ug/mL.



Immunofluorescence of GRK6 in human small intestine tissue with GRK6 antibody at 20 ug/mL.