

## Product datasheet for **TA326700**

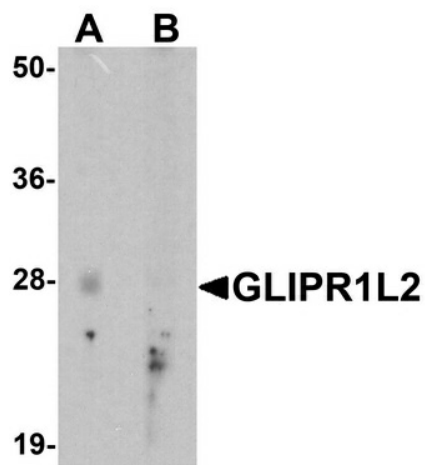
### GLIPR1L2 Rabbit Polyclonal Antibody

#### Product data:

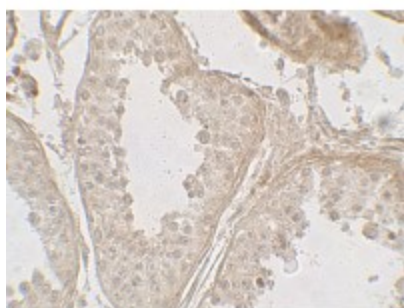
Product Type:	Primary Antibodies
Applications:	IF, IHC, WB
Recommended Dilution:	WB: 1 - 2 ug/mL, ICC: 5 ug/mL, IF: 20 ug/mL
Reactivity:	Human
Host:	Rabbit
Isotype:	IgG
Clonality:	Polyclonal
Immunogen:	GLIPR1L2 antibody was raised against an 15 amino acid peptide near the center of human GLIPR1L2.
Formulation:	GLIPR1L2 antibody is supplied in PBS containing 0.02% sodium azide.
Concentration:	1 mg/ml
Purification:	GLIPR1L2 antibody is affinity chromatography purified via peptide column.
Conjugation:	Unconjugated
Storage:	Store at -20°C as received.
Stability:	Stable for 12 months from date of receipt.
Predicted Protein Size:	Predicted: 28, 31, 38 kDa; Observed: 28 kDa
Gene Name:	GLI pathogenesis-related 1 like 2
Database Link:	<a href="#">NP_001257325</a> <a href="#">Entrez Gene 144321 Human</a> <a href="#">Q4G1C9</a>
Background:	The GLIPR1-like 2 protein (GLIPR1L2) gene is part of a p53 target gene cluster that includes the related proteins GLIPR1 and GLIPR1L2 (2). GLIPR1L2 is similar to both the pathogenesis-related protein (PR) superfamily and the cysteine-rich secretory protein (CRISP) family (1). GLIPR1 is a tumor suppressor whose expression is regulated by p53 (3). Deletions of the GLIPR1/GLIPR1L1/GLIPR1L2 gene cluster have been observed in some multiple myeloma samples, suggesting that these proteins may also be involved in the pathogenesis of multiple myeloma (4).
Synonyms:	MGC39497

[View online »](#)

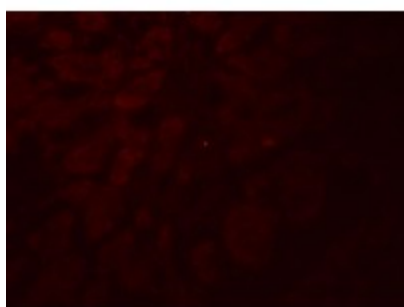
## Product images:



Western blot analysis of GLIPR1L2 in human testis tissue lysate with GLIPR1L2 antibody at 1 ug/ml in (A) the absence and (B) the presence of blocking peptide.



Immunohistochemistry of GLIPR1L2 in human testis tissue with GLIPR1L2 antibody at 5 ug/mL.



Immunofluorescence of GLIPR1L2 in human testis tissue with GLIPR1L2 antibody at 20 ug/mL.