

Product datasheet for **TA326698**

GLIPR1 Rabbit Polyclonal Antibody

Product data:

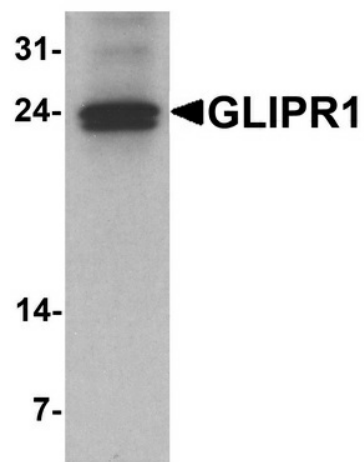
Product Type:	Primary Antibodies
Applications:	IF, WB
Recommended Dilution:	WB: 1 - 2 ug/mL, IF: 5 ug/mL
Reactivity:	Human, Mouse
Host:	Rabbit
Isotype:	IgG
Clonality:	Polyclonal
Immunogen:	GLIPR1 antibody was raised against an 18 amino acid peptide near the center of human GLIPR1.
Formulation:	GLIPR1 antibody is supplied in PBS containing 0.02% sodium azide.
Concentration:	1 mg/ml
Purification:	GLIPR1 antibody is affinity chromatography purified via peptide column.
Conjugation:	Unconjugated
Storage:	Store at -20°C as received.
Stability:	Stable for 12 months from date of receipt.
Predicted Protein Size:	Predicted: 29 kDa; Observed: 24 kDa
Gene Name:	GLI pathogenesis related 1
Database Link:	NP_006842 Entrez Gene 73690 Mouse Entrez Gene 11010 Human P48060
Background:	The glioma pathogenesis-related protein 1 (GLIPR1) is similar to both the pathogenesis-related protein (PR) superfamily and the cysteine-rich secretory protein (CRISP) family (1). GLIPR1 is a tumor suppressor whose expression is regulated by p53; its increased expression is associated with myelomocytic differentiation in macrophages, whereas decreased expression of this gene through gene methylation is associated with prostate cancer (2). The GLIPR1 gene is part of a p53 target gene cluster that includes GLIPR1L1 and GLIPR1L2, two highly homologous proteins whose expression patterns vary (3).
Synonyms:	CRISP7; GLIPR; RTVP1



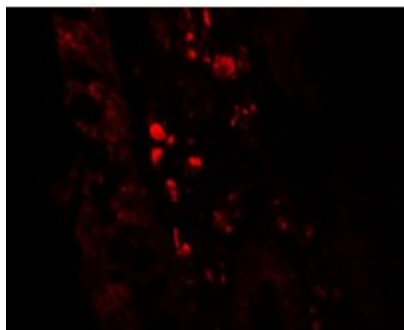
[View online »](#)

Protein Families: Transmembrane

Product images:



Western blot analysis of GLIPR1 in mouse small intestine tissue lysate with GLIPR1 antibody at 1 μ g/ml.



Immunofluorescence of GLIPR1 in human small intestine tissue with GLIPR1 antibody at 5 μ g/mL.