

Product datasheet for **TA326696**

C19orf80 (ANGPTL8) Rabbit Polyclonal Antibody

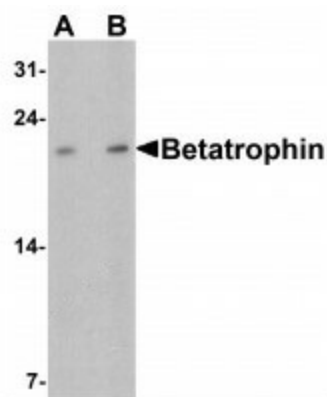
Product data:

Product Type:	Primary Antibodies
Applications:	IF, IHC, WB
Recommended Dilution:	WB: 1 - 2 ug/mL, ICC: 5 ug/mL
Reactivity:	Human, Mouse, Rat
Host:	Rabbit
Isotype:	IgG
Clonality:	Polyclonal
Immunogen:	Betatrophin antibody was raised against a 16 amino acid peptide near the amino terminus of human Betatrophin. The immunogen is located within amino acids 40 - 90 of Betatrophin.
Formulation:	Betatrophin antibody is supplied in PBS containing 0.02% sodium azide.
Concentration:	1 mg/ml
Purification:	Betatrophin antibody is affinity chromatography purified via peptide column.
Conjugation:	Unconjugated
Storage:	Store at -20°C as received.
Stability:	Stable for 12 months from date of receipt.
Predicted Protein Size:	Predicted: 22 kDa; Observed: 22 kDa
Gene Name:	angiopoietin like 8
Database Link:	NP_061157 Entrez Gene 624219 MouseEntrez Gene 100361444 RatEntrez Gene 55908 Human Q6UXH0
Background:	The Betatrophin protein, also known as the hepatocellular carcinoma-associated protein TD26, is an adipocyte- and liver-enriched insulin targeted gene that is thought to play a role in lipid metabolism by regulating serum triglyceride levels (1,2). Betatrophin is closely related to the angiopoietin-like (ANGPTL) protein family. Betatrophin mRNA increases in the cold environment and after treatment with a high-fat diet, while its mRNA levels decrease in response to fasting, suggesting that it may play a role in mediating thermogenesis and energy homeostasis (3).
Synonyms:	C19orf80; PRO1185; PVPA599; RIFL; TD26

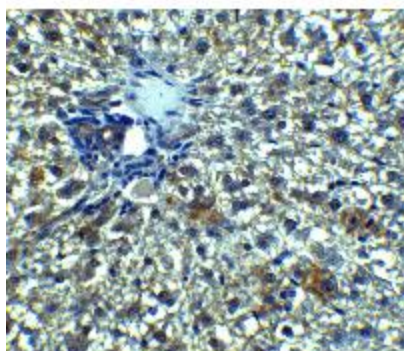


[View online »](#)

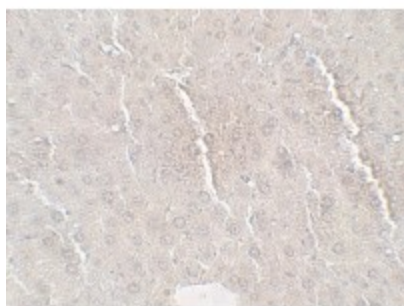
Product images:



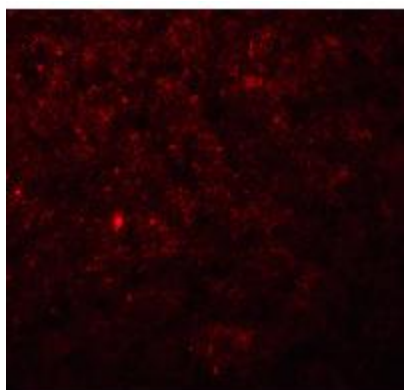
Western blot analysis of Betatrophin in rat liver tissue lysate with Betatrophin antibody at (A) 1 and (B) 2ug/ml.



Immunohistochemistry of Betatrophin in rat liver tissue with Betatrophin Antibody at 5ug/ml.



Immunohistochemistry of Betatrophin in mouse liver tissue with Betatrophin antibody at 5ug/ml.



Immunofluorescence of Betatrophin in rat liver tissue with Betatrophin Antibody at 20ug/ml.