

Product datasheet for **TA326692**

PHC3 Rabbit Polyclonal Antibody

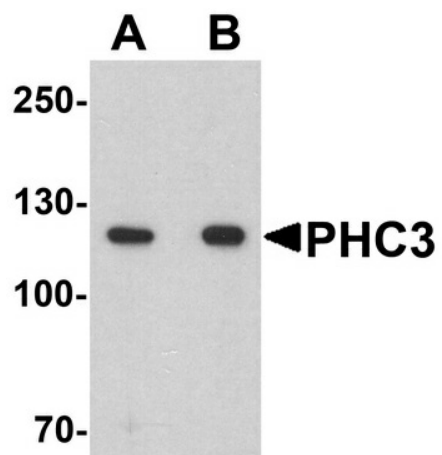
Product data:

Product Type:	Primary Antibodies
Applications:	WB
Recommended Dilution:	WB: 1 - 2 ug/mL
Reactivity:	Human, Mouse, Rat
Host:	Rabbit
Isotype:	IgG
Clonality:	Polyclonal
Immunogen:	PHC3 antibody was raised against a 19 amino acid peptide near the amino terminus of human PHC3.
Formulation:	PHC3 antibody is supplied in PBS containing 0.02% sodium azide.
Concentration:	1 mg/ml
Purification:	PHC3 antibody is affinity chromatography purified via peptide column.
Conjugation:	Unconjugated
Storage:	Store at -20°C as received.
Stability:	Stable for 12 months from date of receipt.
Predicted Protein Size:	Predicted: 109 kDa; Observed: 120 kDa
Gene Name:	polyhomeotic homolog 3
Database Link:	NP_079223 Entrez Gene 241915 MouseEntrez Gene 310258 RatEntrez Gene 80012 Human Q8NDX5
Background:	Polycomb group (PcG) proteins assemble into multimeric protein complexes, which are involved in maintaining the transcriptional repressive state of genes throughout development (1). PHC3 (Polyhomeotic-like protein 3), also known as Early development regulatory protein 3, is a 983 amino acid nuclear protein that is a component of the PcG multiprotein PRC1 complex (2). PRC1 complex acts via chromatin remodeling and modification of histones. PHC3 contains 1 FCS-type zinc finger and SAM (sterile alpha motif) domain (2-3). PHC 3 has been regarded as a candidate tumor suppressor of osteosarcoma (4).
Synonyms:	EDR3; HPH3



[View online »](#)

Product images:



Western blot analysis of PHC3 in 3T3 cell lysate with PHC3 antibody at (A) 1 and (B) 2 ug/ml.