

Product datasheet for **TA326691**

67kDa Laminin Receptor (RPSA) Rabbit Polyclonal Antibody

Product data:

Product Type:	Primary Antibodies
Applications:	IF, IHC, WB
Recommended Dilution:	WB: 1 - 2 ug/mL, ICC: 5 ug/mL, IF: 20 ug/mL
Reactivity:	Human, Mouse
Host:	Rabbit
Isotype:	IgG
Clonality:	Polyclonal
Immunogen:	RPSA antibody was raised against a 17 amino acid peptide near the carboxy terminus of human RPSA.
Formulation:	RPSA antibody is supplied in PBS containing 0.02% sodium azide.
Concentration:	1 mg/ml
Purification:	RPSA antibody is affinity chromatography purified via peptide column.
Conjugation:	Unconjugated
Storage:	Store at -20°C as received.
Stability:	Stable for 12 months from date of receipt.
Predicted Protein Size:	Predicted: 32 kDa; Observed: 38 kDa
Gene Name:	ribosomal protein SA
Database Link:	NP_002286 Entrez Gene 16785 Mouse Entrez Gene 3921 Human P08865
Background:	The 40S ribosomal protein SA (RPSA) is a high-affinity, non-integrin family, laminin receptor, also known as 67 kDa laminin receptor or 37 kDa laminin receptor precursor (37LRP) (1). Laminins, a family of extracellular matrix glycoproteins, are the major noncollagenous constituent of basement membranes and have been implicated in a variety of biological processes including cell adhesion, differentiation, migration, signaling, neurite outgrowth and metastasis (2). RPSA is overexpressed in multiple types of cancers and has recently been shown to act as a cancer-specific death receptor (3).
Synonyms:	1CHD4; 37LRP; 67LR; ICAS; LAMBR; lamR; LAMR1; LBP; LR; LRP; NEM; p40; SA

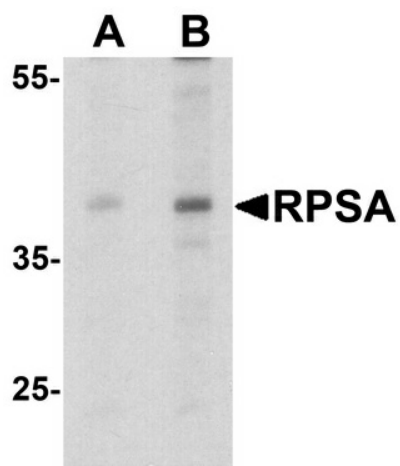


[View online »](#)

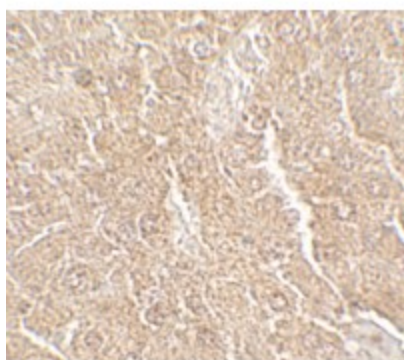
Protein Families: Druggable Genome

Protein Pathways: Ribosome

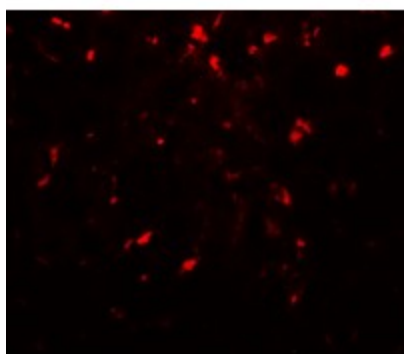
Product images:



Western blot analysis of RPSA in HepG2 cell lysate with RPSA antibody at (A) 1 and (B) 2 ug/ml.



Immunohistochemistry of RPSA in mouse liver tissue with RPSA antibody at 5 ug/mL.



Immunofluorescence of RPSA in mouse liver tissue with RPSA antibody at 20 ug/mL.