

Product datasheet for **TA326690**

DRP1 (DNM1L) Rabbit Polyclonal Antibody

Product data:

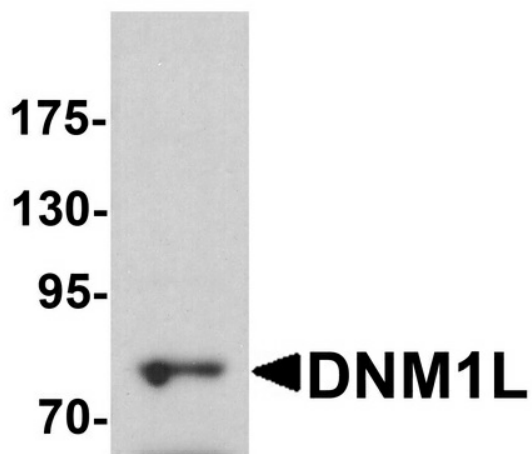
Product Type:	Primary Antibodies
Applications:	IF, IHC, WB
Recommended Dilution:	WB: 1 - 2 ug/mL, ICC: 5 ug/mL, IF: 20 ug/mL
Reactivity:	Human, Mouse
Host:	Rabbit
Isotype:	IgG
Clonality:	Polyclonal
Immunogen:	DNM1L antibody was raised against a 19 amino acid peptide near the center of human DNM1L.
Formulation:	DNM1L antibody is supplied in PBS containing 0.02% sodium azide.
Concentration:	1 mg/ml
Purification:	DNM1L antibody is affinity chromatography purified via peptide column.
Conjugation:	Unconjugated
Storage:	Store at -20°C as received.
Stability:	Stable for 12 months from date of receipt.
Predicted Protein Size:	Predicted: 81 kDa; Observed: 80 kDa
Gene Name:	dynamin 1-like
Database Link:	NP_036192 Entrez Gene 74006 Mouse Entrez Gene 10059 Human O00429
Background:	The Dynamin-1-like protein (DNM1L) is a member of the dynamin superfamily of GTPases (1). DNM1L mediates mitochondrial and peroxisomal division, and is involved in developmentally regulated apoptosis and programmed necrosis (2). Dysfunction of this gene is implicated in several neurological disorders, including Alzheimer's disease. Mutations in this gene are associated with the autosomal dominant disorder, encephalopathy, lethal, due to defective mitochondrial and peroxisomal fission (EMPF) (3).
Synonyms:	DLP1; DRP1; DVLP; DYMPLE; EMPF; EMPF1; HDYNIV



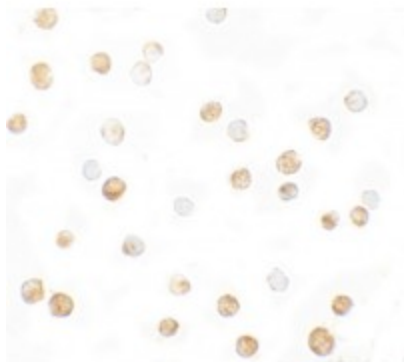
[View online »](#)

Protein Pathways: Endocytosis, Fc gamma R-mediated phagocytosis

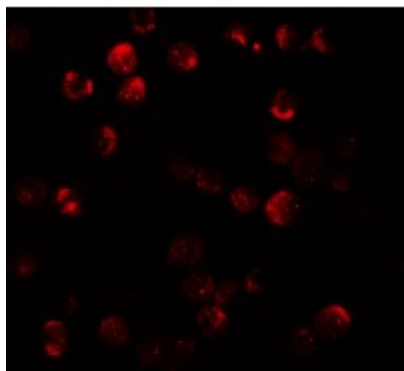
Product images:



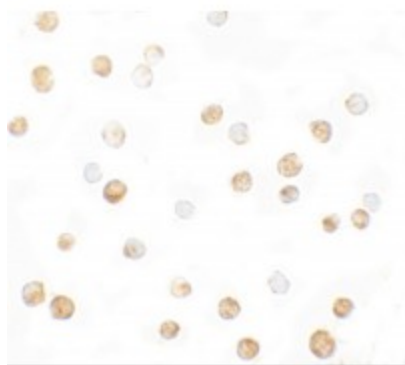
Western blot analysis of DNM1L in HeLa cell lysate with DNM1L antibody at 1 ug/ml.



Immunocytochemistry of DNM1L in HeLa cells with DNM1L antibody at 5 ug/mL.



Immunofluorescence of DNM1L in HeLa cells with DNM1L antibody at 20 ug/mL.



Immunocytochemistry of DNM1L in HeLa cells with DNM1L antibody at 5 ug/mL.