

Product datasheet for **TA326689**

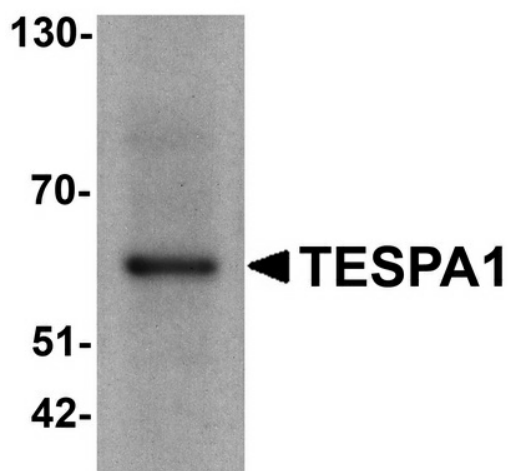
KIAA0748 (TESPA1) Rabbit Polyclonal Antibody

Product data:

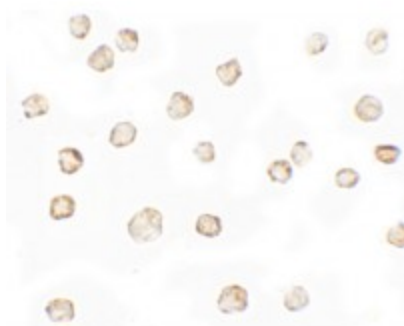
Product Type:	Primary Antibodies
Applications:	IF, IHC, WB
Recommended Dilution:	WB: 1 - 2 ug/mL, ICC: 5 ug/mL, IF: 20 ug/mL
Reactivity:	Human
Host:	Rabbit
Isotype:	IgG
Clonality:	Polyclonal
Immunogen:	TESPA1 antibody was raised against an 18 amino acid peptide near the amino terminus of human TESPA1.
Formulation:	TESPA1 antibody is supplied in PBS containing 0.02% sodium azide.
Concentration:	1 mg/ml
Purification:	TESPA1 antibody is affinity chromatography purified via peptide column.
Conjugation:	Unconjugated
Storage:	Store at -20°C as received.
Stability:	Stable for 12 months from date of receipt.
Predicted Protein Size:	Predicted: 57 kDa; Observed: 60 kDa
Gene Name:	thymocyte expressed, positive selection associated 1
Database Link:	NP_001129502 Entrez Gene 9840 Human A2RU30
Background:	TESPA1 is a critical component of the TCR signalosome and is essential for T cell selection and maturation through the regulation of TCR signaling during T cell development (1). TESPA1 encodes a protein of 458 amino acids and is highly conserved among vertebrate species (2). TESPA1 expression was tightly regulated during T cell development, with highest expression at the DP stage (3). TESPA1 deficiency resulted in failure of positive selection and substantially fewer of CD4+ and CD8+ SP cells in the thymus (1,4).
Synonyms:	HSPC257; KIAA0748

[View online »](#)

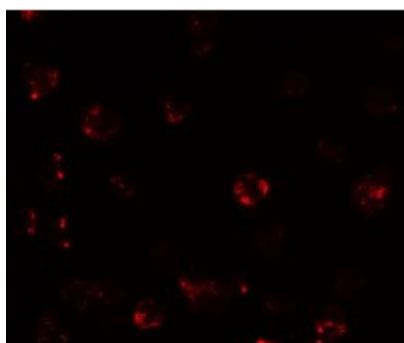
Product images:



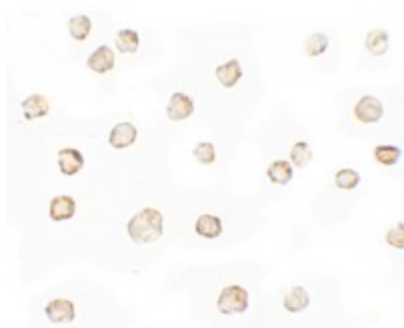
Western blot analysis of TESPA1 in A431 cell lysate with TESPA1 antibody at 1 ug/ml.



Immunocytochemistry of TESPA1 in A431 cells with TESPA1 antibody at 5 ug/mL.



Immunofluorescence of TESPA1 in A431 cells with TESPA1 antibody at 20 ug/mL.



Immunocytochemistry of TESPA1 in A431 cells with TESPA1 antibody at 5 ug/mL.