

Product datasheet for **TA326687**

SDF1 (CXCL12) Rabbit Polyclonal Antibody

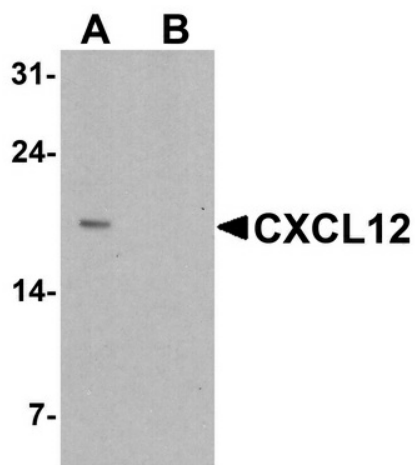
Product data:

Product Type:	Primary Antibodies
Applications:	IHC, WB
Recommended Dilution:	WB: 1 - 2 ug/mL, ICC: 5 ug/mL
Reactivity:	Human, Mouse
Host:	Rabbit
Isotype:	IgG
Clonality:	Polyclonal
Immunogen:	CXCL12 antibody was raised against a 16 amino acid peptide near the center of human CXCL12
Formulation:	CXCL12 antibody is supplied in PBS containing 0.02% sodium azide.
Concentration:	1 mg/ml
Purification:	CXCL12 antibody is affinity chromatography purified via peptide column.
Conjugation:	Unconjugated
Storage:	Store at -20°C as received.
Stability:	Stable for 12 months from date of receipt.
Predicted Protein Size:	Predicted: 15 kDa; Observed: 18 kDa
Gene Name:	C-X-C motif chemokine ligand 12
Database Link:	NP_001171605 Entrez Gene 6387 Human P48061
Background:	The CXCL12 protein, also known as SDF1, is a stromal cell-derived alpha chemokine member of the intercrine family. CXCL12 functions as the ligand for the G-protein coupled receptor, chemokine (C-X-C motif) receptor 4 (CXCR4) and CXCR7, and plays a role in many diverse cellular functions, including embryogenesis, immune surveillance, inflammation response, tissue homeostasis, and tumor growth and metastasis (reviewed in 1). Mutations in this gene are associated with resistance to human immunodeficiency virus type 1 infections (2).
Synonyms:	IRH; PBSF; SCYB12; SDF1; TLSF; TPAR1



[View online »](#)

Product images:



Western blot analysis of CXCL12 in HeLa cell lysate with CXCL12 antibody at 1 ug/ml in (A) the absence and (B) the presence of blocking peptide.



Immunocytochemistry of CXCL12 in HeLa cells with CXCL12 antibody at 5 ug/mL.