

Product datasheet for **TA326684**

LC3C (MAP1LC3C) Rabbit Polyclonal Antibody

Product data:

Product Type:	Primary Antibodies
Applications:	IF, IHC, WB
Recommended Dilution:	WB: 1 - 2 ug/mL, ICC: 5 ug/mL, IF: 20 ug/mL
Reactivity:	Human
Host:	Rabbit
Isotype:	IgG
Clonality:	Polyclonal
Immunogen:	MAP1LC3C antibody was raised against an 18 amino acid peptide near the carboxy terminus of human MAP1LC3C.
Formulation:	MAP1LC3C antibody is supplied in PBS containing 0.02% sodium azide.
Concentration:	1 mg/ml
Purification:	MAP1LC3C antibody is affinity chromatography purified via peptide column.
Conjugation:	Unconjugated
Storage:	Store at -20°C as received.
Stability:	Stable for 12 months from date of receipt.
Predicted Protein Size:	Predicted: 16 kDa; Observed: 16 kDa
Gene Name:	microtubule associated protein 1 light chain 3 gamma
Database Link:	NP_001004343 Entrez Gene 440738 Human Q9BXW4

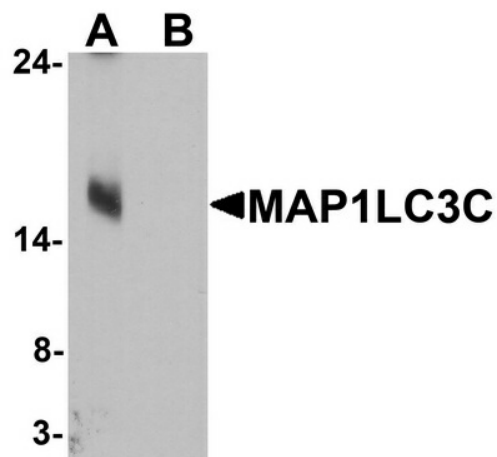
Background: Microtubule-associated proteins (MAPs) regulate microtubule stability and play critical roles in neuronal development and plasticity (1). MAP1LC3C belongs to the MAP1 LC3 family of proteins that form mature complexes with MAP1A and MAP1B which are thought to be important in the formation and development of axons and dendrites (2). MAP1LC3C is one of three isoforms of MAP1LC3, the mammalian homolog of yeast ATG8, an essential autophagy protein. These isoforms exhibit distinct expression patterns and MAP1LC3C, like MAP1LC3A but not MAP1LC3B, is post-translationally modified, suggesting the three isoforms may have different physiological functions (3).



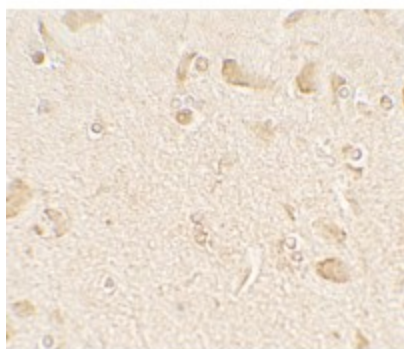
[View online »](#)

Synonyms: ATG8J; LC3C

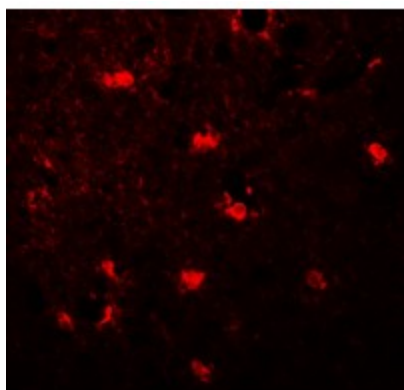
Product images:



Western blot analysis of MAP1LC3C in human brain tissue lysate with MAP1LC3C antibody at 1 ug/ml in (A) the absence and (B) the presence of blocking peptide.



Immunohistochemistry of MAP1LC3C in human brain tissue with MAP1LC3C antibody at 5 ug/mL.



Immunofluorescence of MAP1LC3C in human brain tissue with MAP1LC3C antibody at 20 ug/mL.