

## Product datasheet for **TA326683**

### LC3B (MAP1LC3B) Rabbit Polyclonal Antibody

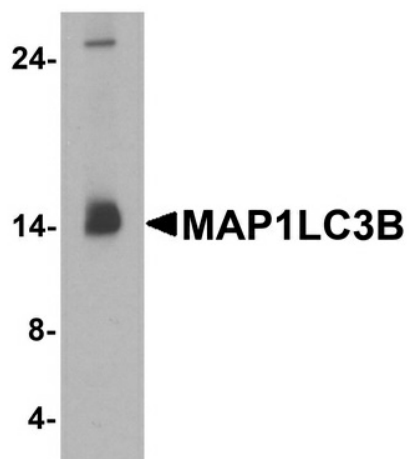
#### Product data:

Product Type:	Primary Antibodies
Applications:	IF, IHC, WB
Recommended Dilution:	WB: 1 - 2 ug/mL, ICC: 5 ug/mL, IF: 20 ug/mL
Reactivity:	Human, Mouse, Rat
Host:	Rabbit
Isotype:	IgG
Clonality:	Polyclonal
Immunogen:	MAP1LC3B antibody was raised against an 18 amino acid peptide near the amino terminus of human MAP1LC3B.
Formulation:	MAP1LC3B antibody is supplied in PBS containing 0.02% sodium azide.
Concentration:	1 mg/ml
Purification:	MAP1LC3B antibody is affinity chromatography purified via peptide column.
Conjugation:	Unconjugated
Storage:	Store at -20°C as received.
Stability:	Stable for 12 months from date of receipt.
Predicted Protein Size:	Predicted: 14 kDa; Observed: 14 kDa
Gene Name:	microtubule associated protein 1 light chain 3 beta
Database Link:	<a href="#">NP_073729</a> <a href="#">Entrez Gene 64862 Rat</a> <a href="#">Entrez Gene 67443 Mouse</a> <a href="#">Entrez Gene 81631 Human</a> <a href="#">Q9GZQ8</a>
Background:	Microtubule-associated proteins (MAPs) regulate microtubule stability and play critical roles in neuronal development and plasticity (1). MAP1LC3B belongs to the MAP1 LC3 family and it includes 3 different light chains, LC1, LC2 and LC3 (2). MAP1LC3B is involved in formation of autophagosomal vacuoles (autophagosomes) (3). It is most abundant in heart, brain, skeletal muscle and testis. MAP1LC3B is essential for autophagy and associated to the autophagosome membranes after processing (4).
Synonyms:	1BLC3; ATG8F; LC3B; MAP1A; MAP1LC3B-a

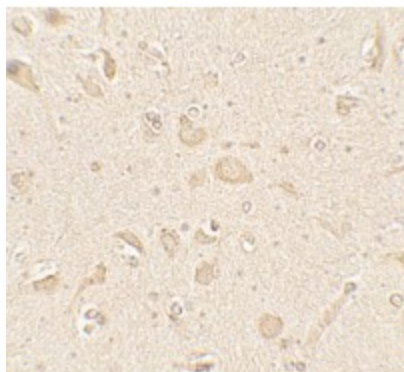


[View online »](#)

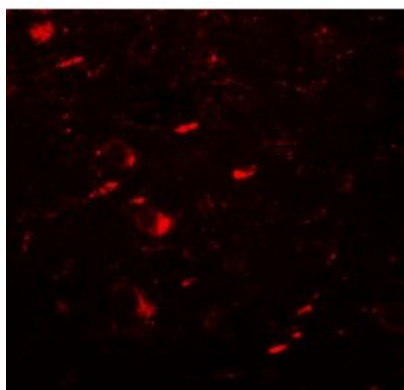
## Product images:



Western blot analysis of MAP1LC3B in human brain tissue lysate with MAP1LC3B antibody at 1 ug/ml.



Immunohistochemistry of MAP1LC3B in human brain tissue with MAP1LC3B antibody at 5 ug/mL.



Immunofluorescence of MAP1LC3B in human brain tissue with MAP1LC3B antibody at 20 ug/mL.