

Product datasheet for **TA326680**

AMIGO1 Rabbit Polyclonal Antibody

Product data:

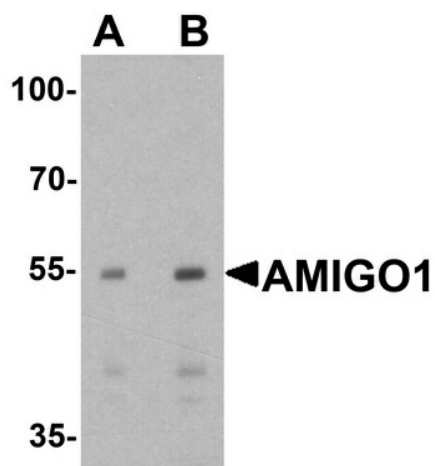
Product Type:	Primary Antibodies
Applications:	IF, IHC, WB
Recommended Dilution:	WB: 1 - 2 ug/mL, ICC: 5 ug/mL, IF: 20 ug/mL
Reactivity:	Human, Mouse, Rat
Host:	Rabbit
Isotype:	IgG
Clonality:	Polyclonal
Immunogen:	AMIGO1 antibody was raised against a 19 amino acid peptide near the carboxy terminus of human AMIGO1
Formulation:	AMIGO1 antibody is supplied in PBS containing 0.02% sodium azide.
Concentration:	1 mg/ml
Purification:	AMIGO1 antibody is affinity chromatography purified via peptide column.
Conjugation:	Unconjugated
Storage:	Store at -20°C as received.
Stability:	Stable for 12 months from date of receipt.
Predicted Protein Size:	Predicted: 54 kDa; Observed: 55 kDa
Gene Name:	adhesion molecule with Ig-like domain 1
Database Link:	NP_065754 Entrez Gene 229715 MouseEntrez Gene 295365 RatEntrez Gene 57463 Human Q86WK6
Background:	The amphoterin-induced gene and ORF (AMIGO1) protein is a brain-enriched, glycosylated transmembrane immunoglobulin (Ig) superfamily protein with six extracellular leucine-rich repeats (LRRs) and one Ig-like domain. It and the related proteins AMIGO2 and AMIGO3 are thought to be cell adhesion molecules expressed on fiber tracts of neuronal tissues and participate in their formation (1). AMIGO1 has also been suggested to play important roles in dendritic outgrowth during development and could modulate the survival of developing and adult neurons (2).
Synonyms:	ALI2; AMIGO; AMIGO-1



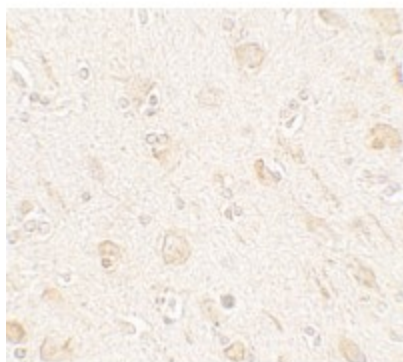
[View online »](#)

Protein Families: Transmembrane

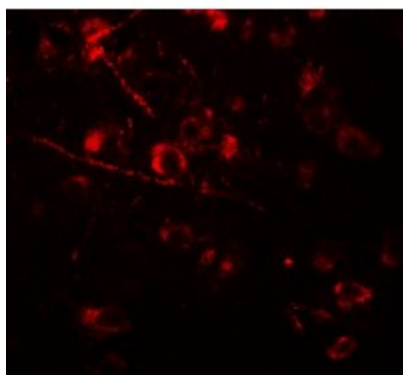
Product images:



Western blot analysis of AMIGO1 in HeLa cell lysate with AMIGO1 antibody at (A) 1 and (B) 2 ug/ml.



Immunohistochemistry of AMIGO1 in human brain tissue with AMIGO1 antibody at 5 ug/mL.



Immunofluorescence of AMIGO1 in human brain tissue with AMIGO1 antibody at 20 ug/mL.