

Product datasheet for **TA326679**

APPBP2 Rabbit Polyclonal Antibody

Product data:

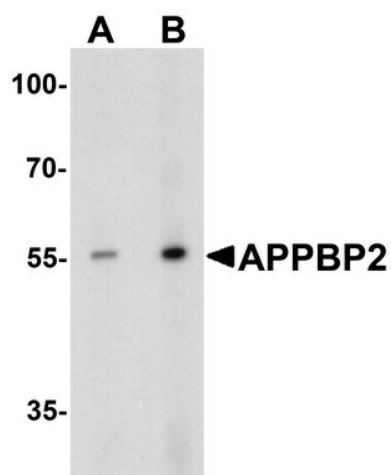
Product Type:	Primary Antibodies
Applications:	IF, IHC, WB
Recommended Dilution:	WB: 0.5 - 1 ug/mL, ICC: 5 ug/mL, IF: 20 ug/mL
Reactivity:	Human, Mouse, Rat
Host:	Rabbit
Isotype:	IgG
Clonality:	Polyclonal
Immunogen:	APPBP2 antibody was raised against an 18 amino acid peptide near the carboxy terminus of human APPBP2.
Formulation:	APPBP2 antibody is supplied in PBS containing 0.02% sodium azide.
Concentration:	1 mg/ml
Purification:	APPBP2 antibody is affinity chromatography purified via peptide column.
Conjugation:	Unconjugated
Storage:	Store at -20°C as received.
Stability:	Stable for 12 months from date of receipt.
Predicted Protein Size:	Predicted: 64 kDa; Observed: 57 kDa
Gene Name:	amyloid beta precursor protein binding protein 2
Database Link:	NP_006371 Entrez Gene 66884 Mouse Entrez Gene 303396 Rat Entrez Gene 10513 Human Q92624
Background:	The amyloid beta precursor protein (cytoplasmic tail) binding protein 2 (APPBP2), also known as PAT1, interacts with microtubules and is functionally associated with beta-amyloid precursor protein transport and/or processing (1). The beta-amyloid precursor protein is a cell surface protein with signal-transducing properties, and it is thought to play a role in the pathogenesis of Alzheimer's disease (2). APPBP2 has been found to be highly expressed in breast cancer (3).
Synonyms:	APP-BP2; HS.84084; PAT1



[View online »](#)

Protein Families: Druggable Genome

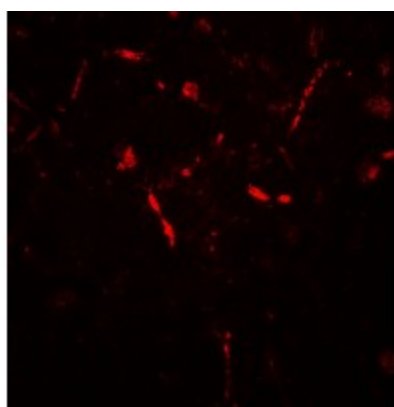
Product images:



Western blot analysis of APPBP2 in human brain tissue lysate with APPBP2 antibody at (A) 0.5 and (B) 1 $\mu\text{g}/\text{ml}$.



Immunohistochemistry of APPBP2 in human brain tissue with APPBP2 antibody at 5 $\mu\text{g}/\text{mL}$.



Immunofluorescence of APPBP2 in human brain tissue with APPBP2 antibody at 20 $\mu\text{g}/\text{mL}$.