

Product datasheet for **TA326678**

PPFIA3 Rabbit Polyclonal Antibody

Product data:

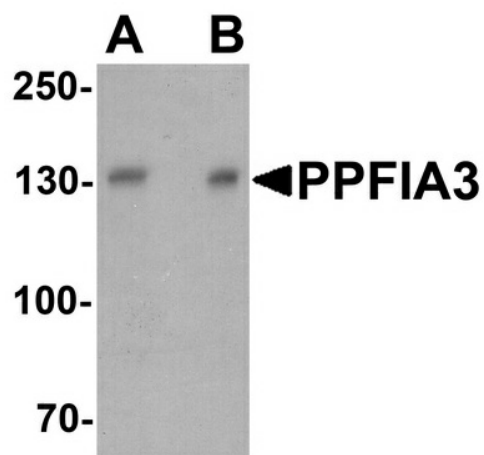
Product Type:	Primary Antibodies
Applications:	WB
Recommended Dilution:	WB: 1 - 2 ug/mL
Reactivity:	Human, Mouse, Rat
Host:	Rabbit
Isotype:	IgG
Clonality:	Polyclonal
Immunogen:	PPFIA3 antibody was raised against a 17 amino acid peptide near the carboxy terminus of human PPFIA3
Formulation:	PPFIA3 antibody is supplied in PBS containing 0.02% sodium azide.
Concentration:	1 mg/ml
Purification:	PPFIA3 antibody is affinity chromatography purified via peptide column.
Conjugation:	Unconjugated
Storage:	Store at -20°C as received.
Stability:	Stable for 12 months from date of receipt.
Predicted Protein Size:	Predicted: 131 kDa; Observed: 131 kDa
Gene Name:	PTPRF interacting protein alpha 3
Database Link:	NP_003651 Entrez Gene 76787 MouseEntrez Gene 140591 RatEntrez Gene 8541 Human O75145
Background:	The PPFIA3 protein is a member of the LAR protein-tyrosine phosphatase-interacting protein (liprin) family, a family of transmembrane protein tyrosine phosphatases known to be important for axon guidance and mammary gland development (1). Similar to the other liprin family members, PPFIA3 can interact with ERC2, a member of the ELKS-Rab6-interacting protein-CAST family of proteins at the presynaptic termini, suggesting that these proteins may play a role in the molecular organization of presynaptic zones (2).
Synonyms:	LPNA3



[View online »](#)

Protein Families: Druggable Genome

Product images:



Western blot analysis of PPFIA3 in 293 cell lysate with PPFIA3 antibody at (A) 1 and (B) 2 ug/ml.