

## Product datasheet for **TA326675**

### LRRC26 Rabbit Polyclonal Antibody

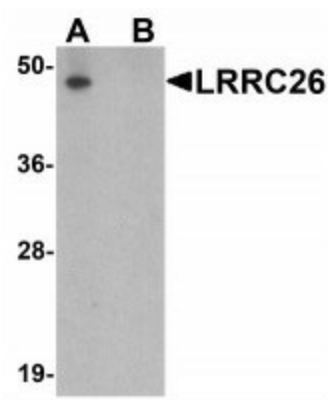
#### Product data:

Product Type:	Primary Antibodies
Applications:	IF, IHC, WB
Recommended Dilution:	WB: 0.5 - 1 ug/mL
Reactivity:	Human
Host:	Rabbit
Isotype:	IgG
Clonality:	Polyclonal
Immunogen:	LRRC26 antibody was raised against an 18 amino acid peptide near the carboxy terminus of human LRRC26. The immunogen is located within the last 50 amino acids of LRRC26.
Formulation:	LRRC26 antibody is supplied in PBS containing 0.02% sodium azide.
Concentration:	1 mg/ml
Purification:	LRRC26 antibody is affinity chromatography purified via peptide column.
Conjugation:	Unconjugated
Storage:	Store at -20°C as received.
Stability:	Stable for 12 months from date of receipt.
Predicted Protein Size:	Predicted: 37 kDa; Observed: 48 kDa
Gene Name:	leucine rich repeat containing 26
Database Link:	<a href="#">NP_001013675</a> <a href="#">Entrez Gene 389816 Human</a> <a href="#">Q2I0M4</a>
Background:	The LRRC26 protein was initially identified as a cytokeratin-associated protein whose expression was elevated in multiple cancer cell lines and cancer specimens as well in normal prostate and salivary gland tissues (1). LRRC26 was later found to negatively regulate the NF-kappaB activation and suppresses tumor growth and metastasis (2). LRRC26 can also act to selectively alter the efficacy of large conductance calcium-activated K (BK) channels (3).
Synonyms:	bA350O14.10; CAPC
Protein Families:	Transmembrane

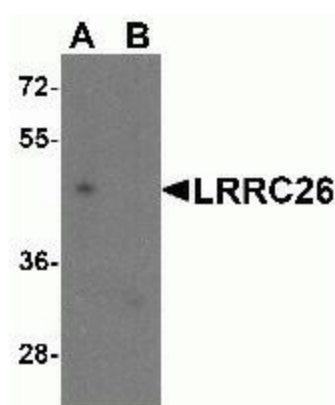


[View online »](#)

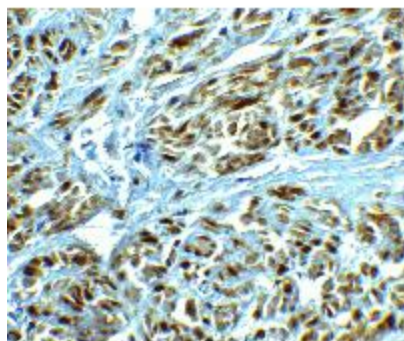
## Product images:



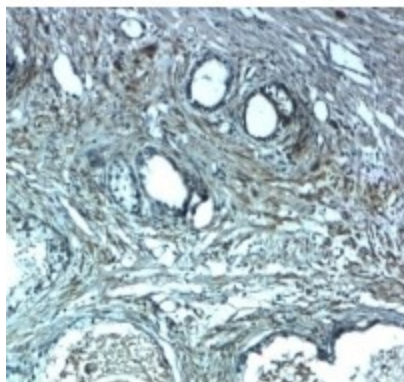
Western blot analysis of LRRC26 in human prostate tissue lysate with LRRC26 antibody at 0.5ug/ml in (A) the absence and (B) the presence of blocking peptide.



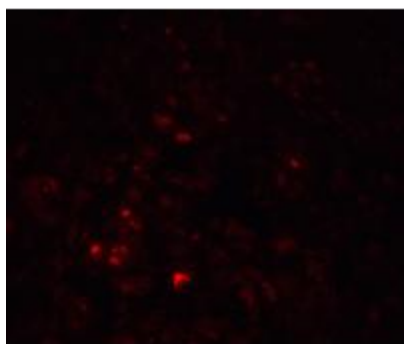
Western blot analysis of LRRC26 in Jurkat cell lysate with LRRC26 antibody at 0.5ug/ml in (A) the absence and (B) the presence of blocking peptide.



Immunohistochemistry of LRRC26 in human prostate tissue with LRRC26 antibody at 2.5ug/ml.



Immunohistochemistry of LRRC26 in human prostate tissue with LRRC26 antibody at 2.5ug/ml.



Immunofluorescence of LRRC26 in human prostate tissue with LRRC26 Antibody at 20ug/ml.