

## Product datasheet for **TA326673**

### KDM1B Rabbit Polyclonal Antibody

#### Product data:

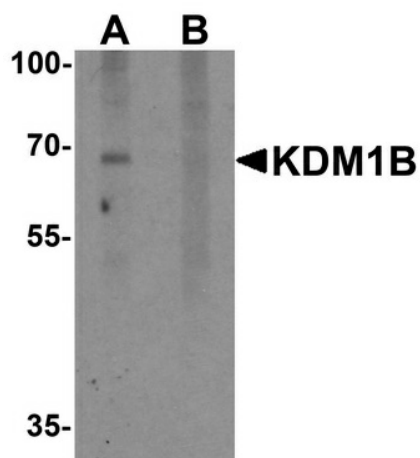
Product Type:	Primary Antibodies
Applications:	WB
Recommended Dilution:	WB: 1 - 2 ug/mL
Reactivity:	Human, Mouse
Host:	Rabbit
Isotype:	IgG
Clonality:	Polyclonal
Immunogen:	KDM1B antibody was raised against a 17 amino acid peptide near the amino terminus of human KDM1B.
Formulation:	KDM1B antibody is supplied in PBS containing 0.02% sodium azide.
Concentration:	1 mg/ml
Purification:	KDM1B antibody is affinity chromatography purified via peptide column.
Conjugation:	Unconjugated
Storage:	Store at -20°C as received.
Stability:	Stable for 12 months from date of receipt.
Predicted Protein Size:	Predicted: 65 kDa; Observed: 68 kDa
Gene Name:	lysine demethylase 1B
Database Link:	<a href="#">NP_694587</a> <a href="#">Entrez Gene 218214 Mouse</a> <a href="#">Entrez Gene 221656 Human</a> <a href="#">Q8NB78</a>
Background:	Flavin-dependent histone demethylases regulate histone lysine methylation, an epigenetic mark that regulates gene expression and chromatin function (reviewed in 1). KDM1B is a recently identified histone H3K4 demethylase that is required to establish maternal genomic imprints; targeted disruption of the KDM1B gene in mice led to lethality in their embryos, suggesting demethylation of H3K4 is critical for establishing the DNA methylation imprints (2). KDM1B has also been shown to play a role in the transcription elongation in several genes (3).
Synonyms:	AOF1; bA204B7.3; C6orf193; dj298j15.2; LSD2



[View online »](#)

Protein Families: Druggable Genome

**Product images:**



Western blot analysis of KDM1B in 3T3 cell lysate with KDM1B antibody at 2 ug/ml in (A) the absence and (B) the presence of blocking peptide.