

Product datasheet for **TA326672**

BHLHA15 Rabbit Polyclonal Antibody

Product data:

Product Type:	Primary Antibodies
Applications:	IF, IHC, WB
Recommended Dilution:	WB: 1 - 2 ug/mL, ICC: 5 ug/mL, IF: 20 ug/mL
Reactivity:	Human, Mouse, Rat
Host:	Rabbit
Isotype:	IgG
Clonality:	Polyclonal
Immunogen:	BHLHA15 antibody was raised against a 18 amino acid peptide near the center of human BHLHA15.
Formulation:	BHLHA15 antibody is supplied in PBS containing 0.02% sodium azide.
Concentration:	1 mg/ml
Purification:	BHLHA15 antibody is affinity chromatography purified via peptide column.
Conjugation:	Unconjugated
Storage:	Store at -20°C as received.
Stability:	Stable for 12 months from date of receipt.
Predicted Protein Size:	Predicted: 21 kDa; Observed: 24 kDa
Gene Name:	basic helix-loop-helix family member a15
Database Link:	NP_803238 Entrez Gene 17341 MouseEntrez Gene 25334 RatEntrez Gene 168620 Human Q7RTS1
Background:	BHLHA15 (basic helix-loop-helix protein 15), also known as MIST1 (muscle intestine and stomach expression 1) belongs to the bHLH family of transcription factors and plays a role in regulating the transcriptional activity of MYOD1 in muscle cell development as well as serving as a key regulator of acinar cell function (1,2). BHLHA15 contains a basic helix-loop-helix (bHLH) domain and is capable of binding to E-box motifs as a homodimer or a heterodimer with E-proteins. It may also negatively regulate bHLH-mediated transcription through a N-terminal repressor domain (3). It is expressed in mammary epithelial cells and is essential for the regulation of mammary gland development (4).

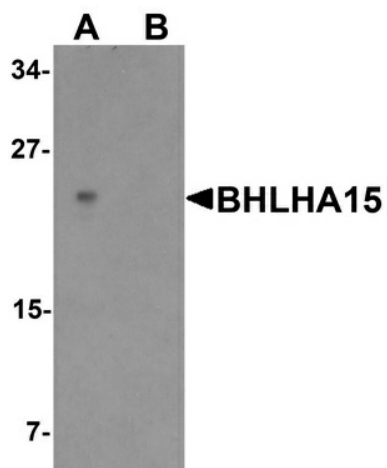


[View online »](#)

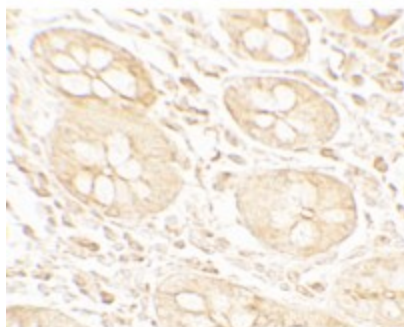
Synonyms: BHLHB8; MIST1

Protein Pathways: Maturity onset diabetes of the young

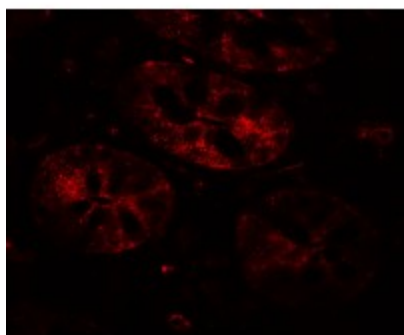
Product images:



Western blot analysis of BHLHA15 in rat small intestine tissue lysate with BHLHA15 antibody at 1 ug/ml in (A) the absence and (B) the presence of blocking peptide



Immunohistochemistry of BHLHA15 in human small intestine tissue with BHLHA15 antibody at 5 ug/mL.



Immunofluorescence of BHLHA15 in human small intestine tissue with BHLHA15 antibody at 20 ug/mL.