

Product datasheet for **TA326666**

IL36 beta (IL36B) Rabbit Polyclonal Antibody

Product data:

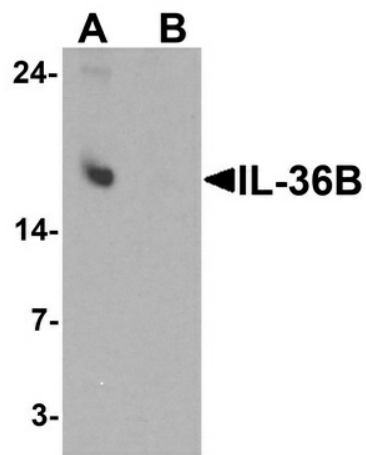
Product Type:	Primary Antibodies
Applications:	IF, IHC, WB
Recommended Dilution:	WB: 1 - 2 ug/mL
Reactivity:	Human
Host:	Rabbit
Isotype:	IgG
Clonality:	Polyclonal
Immunogen:	IL-36B antibody was raised against a 16 amino acid peptide near the carboxy terminus of human IL-36B.
Formulation:	IL-36B antibody is supplied in PBS containing 0.02% sodium azide.
Concentration:	1 mg/ml
Purification:	IL-36B antibody is affinity chromatography purified via peptide column.
Conjugation:	Unconjugated
Storage:	Store at -20°C as received.
Stability:	Stable for 12 months from date of receipt.
Predicted Protein Size:	Predicted: 18 kDa; Observed: 17 kDa
Gene Name:	interleukin 36, beta
Database Link:	NP_055253 Entrez Gene 27177 Human Q9NZH7
Background:	IL-36B is a member of the interleukin 1 cytokine family whose gene and eight other interleukin 1 family genes form a cytokine gene cluster on chromosome 2 (1). IL-36B is thought to activate the NF-kappaB pathway through IL-1 receptor family members IL-1RL2 and IL-1RAcP (2). Like the related proteins IL-36A and IL-36G, IL-36B requires post-translational processing for full agonist activity, but the cleavage mechanism is currently unknown (3). The IL-36 cytokines have been suggested to amplify Th1 responses by enhancing proliferation and Th1 polarization of naive CD4+ T cells (4).
Synonyms:	FIL1; FIL1-(ETA); FIL1H; FIL1-(ETA); IL-1F8; IL-1H2; IL1-ETA; IL1F8; IL1H2



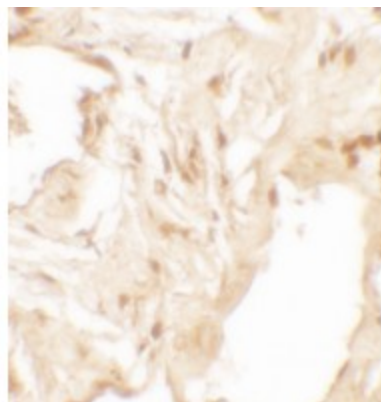
[View online »](#)

Protein Families: Druggable Genome, Secreted Protein

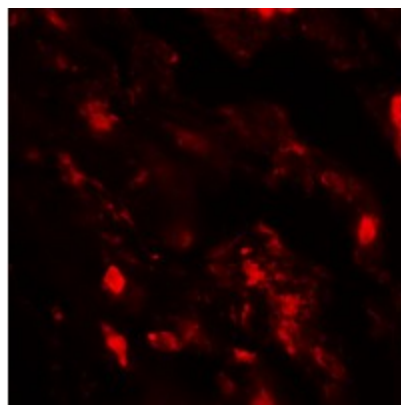
Product images:



Western blot analysis of IL-36B in A549 cell lysate with IL-36B antibody at 1 ug/ml in (A) the absence and (B) the presence of blocking peptide.



Immunohistochemistry of IL-36B in human lung tissue with IL-36B antibody at 2.5 ug/mL.



Immunofluorescence of IL-36B in human lung tissue with IL-36B antibody at 20 ug/mL.