

Product datasheet for **TA326663**

IL1RL2 Rabbit Polyclonal Antibody

Product data:

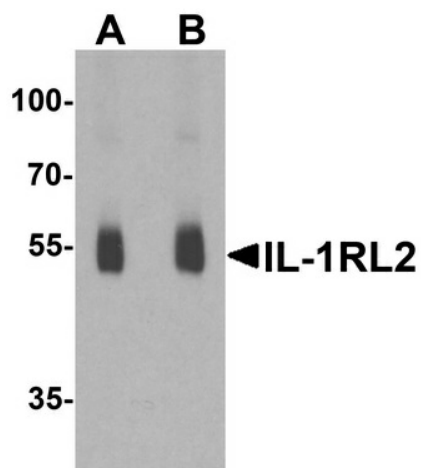
Product Type:	Primary Antibodies
Applications:	IF, IHC, WB
Recommended Dilution:	WB: 1 - 2 ug/mL
Reactivity:	Human, Mouse, Rat
Host:	Rabbit
Isotype:	IgG
Clonality:	Polyclonal
Immunogen:	IL-1RL2 antibody was raised against a 16 amino acid peptide near the center of human IL-1RL2.
Formulation:	IL-1RL2 antibody is supplied in PBS containing 0.02% sodium azide.
Concentration:	1 mg/ml
Purification:	IL-1RL2 antibody is affinity chromatography purified via peptide column.
Conjugation:	Unconjugated
Storage:	Antibody can be stored at 4°C up to one year. Antibodies should not be exposed to prolonged high temperatures.
Stability:	Stable for 12 months from date of receipt.
Predicted Protein Size:	Predicted: 61 kDa; Observed: 55 kDa
Gene Name:	interleukin 1 receptor like 2
Database Link:	NP_003845 Entrez Gene 107527 Mouse Entrez Gene 171106 Rat Entrez Gene 8808 Human Q9HB29
Background:	IL-1RL2 is a member of the interleukin 1 receptor family, but it is incapable of binding to interleukin 1 alpha and interleukin 1 beta with high affinity (1). Together with IL-1RAcP, it can bind members of the IL-36 cytokine family, leading to activation of the NF-kappaB pathway (2). IL-1RL2 can also bind to IL-1F10, resulting in a decreased product of Th17 cytokines in response to immunological or LPS challenge, suggesting that one potential role of IL-1RL2 may be to modulate the immune and inflammation response (3).
Synonyms:	IL-1Rrp2; IL-36R; IL1R-rp2; IL1RRP2



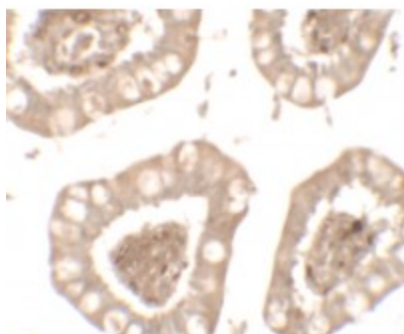
[View online »](#)

Protein Families: Druggable Genome, Transmembrane

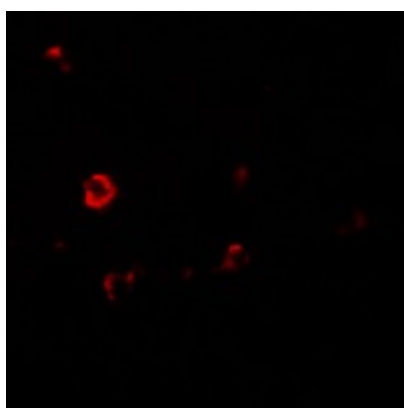
Product images:



Western blot analysis of IL-1RL2 in human small intestine lysate with IL-1RL2 antibody at (A) 1 and (B) 2 ug/ml.



Immunohistochemistry of IL-1RL2 in human small intestine tissue with IL-1RL2 antibody at 5 ug/mL.



Immunofluorescence of IL-1RL2 in human small intestine tissue with IL-1RL2 antibody at 20 ug/mL.