

Product datasheet for **TA326662**

IL37 Rabbit Polyclonal Antibody

Product data:

Product Type:	Primary Antibodies
Applications:	IF, IHC, WB
Recommended Dilution:	WB: 1 - 2 ug/mL
Reactivity:	Human
Host:	Rabbit
Isotype:	IgG
Clonality:	Polyclonal
Immunogen:	IL-37 antibody was raised against a 17 amino acid peptide near the amino terminus of human IL-37.
Formulation:	IL-37 Antibody is supplied in PBS containing 0.02% sodium azide.
Concentration:	1 mg/ml
Purification:	IL-37 Antibody is affinity chromatography purified via peptide column.
Conjugation:	Unconjugated
Storage:	Store at -20°C as received.
Stability:	Stable for 12 months from date of receipt.
Predicted Protein Size:	Predicted: 24 kDa; Observed: 23 kDa
Gene Name:	interleukin 37
Database Link:	NP_055254 Entrez Gene 27178 Human Q9NZH6

Background: Interleukin 37 (IL-37) is a member of the interleukin 1 cytokine family (reviewed in 1). It can bind to, and may be a ligand for interleukin 18 receptor (IL18R1/IL-1Rrp). IL-37 also binds to interleukin 18 binding protein (IL18BP), an inhibitory binding protein of interleukin 18 (IL18), and subsequently forms a complex with IL18 receptor beta subunit, and through which it inhibits the activity of IL18 (1). IL-37 can also interact with Smad3 and expression of IL-37 in macrophages or epithelial cells resulted in near complete suppression of pro-inflammatory cytokines, suggesting that IL-37 may act as a natural suppressor of the innate inflammatory and immune responses (2,3).

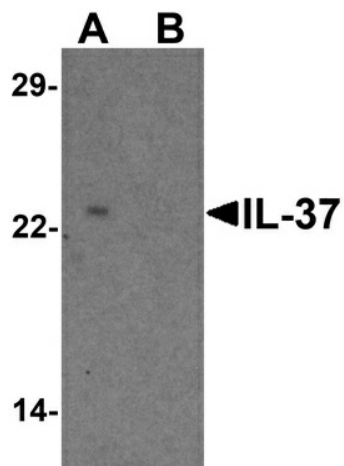


[View online »](#)

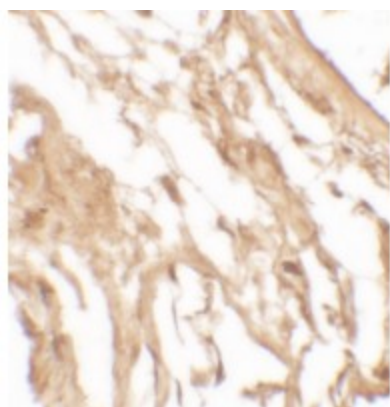
Synonyms: FIL1; FIL1(ZETA); FIL1Z; IL-1F7; IL-1H; IL-1H4; IL-1RP1; IL-37; IL1F7; IL1H4; IL1RP1

Protein Families: Druggable Genome, Secreted Protein

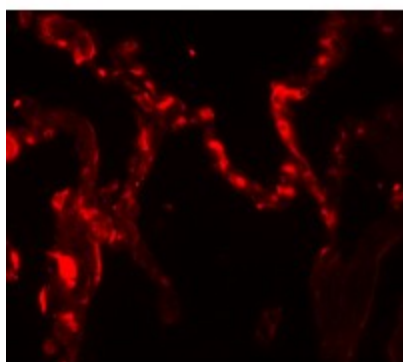
Product images:



Western blot analysis of IL-37 in human lung tissue lysate with IL-37 antibody at 1 ug/ml in (A) the presence and (B) the absence of blocking peptide.



Immunohistochemistry of IL-12A in human kidney tissue with IL-12A antibody at 5 ug/mL.



Immunofluorescence of IL-12A in human kidney tissue with IL-12A antibody at 20 ug/mL.