

Product datasheet for **TA326660**

Vinculin (VCL) Rabbit Polyclonal Antibody

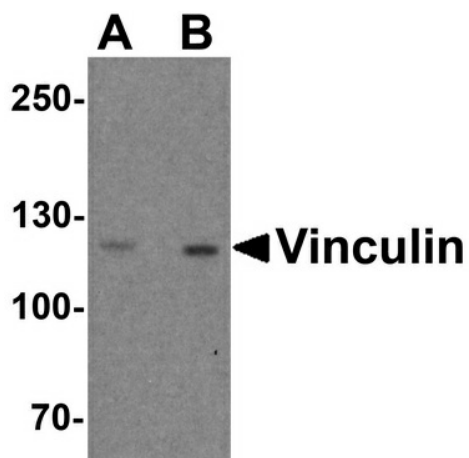
Product data:

Product Type:	Primary Antibodies
Applications:	IF, IHC, WB
Recommended Dilution:	WB: 1 - 2 ug/mL
Reactivity:	Human, Mouse, Rat
Host:	Rabbit
Isotype:	IgG
Clonality:	Polyclonal
Immunogen:	Vinculin antibody was raised against a 16 amino acid peptide near the carboxy terminus of human Vinculin.
Formulation:	Vinculin Antibody is supplied in PBS containing 0.02% sodium azide.
Concentration:	1 mg/ml
Purification:	Vinculin Antibody is affinity chromatography purified via peptide column.
Conjugation:	Unconjugated
Storage:	Store at -20°C as received.
Stability:	Stable for 12 months from date of receipt.
Predicted Protein Size:	Predicted: 117 kDa; Observed: 120 kDa
Gene Name:	vinculin
Database Link:	NP_003364 Entrez Gene 7414 Human P18206
Background:	Vinculin is a cytoskeletal protein that plays an important role in the regulation of focal adhesions and embryonic development (1). Three structural vinculin domains include an amino-terminal head, a short flexible proline-rich region and a carboxy-terminal tail (2). Expression of vinculin were shown to be affected by the level of actin expression (2,3). Vinculin deficiencies are associated with a decrease in cell adhesion and an increase in cell motility, suggesting a possible role in metastatic growth (4). Defects in VCL are the cause of cardiomyopathy dilated type 1W (CMD1W) (5).
Synonyms:	CMD1W; CMH15; HEL114; MV; MVCL

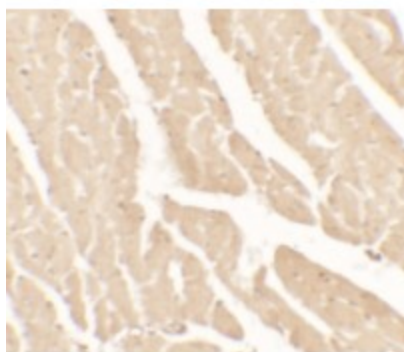


[View online »](#)

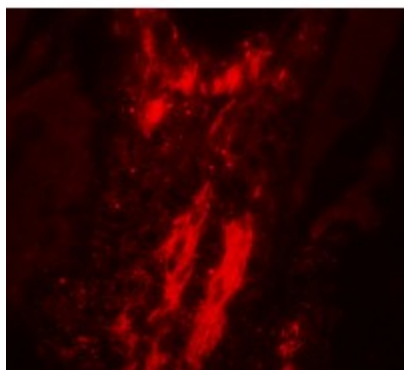
Product images:



Western blot analysis of Vinculin in PC-3 cell lysate with Vinculin antibody at (A) 1 and (B) 2 ug/ml.



Immunohistochemistry of Vinculin in rat small intestine tissue with Vinculin antibody at 5 ug/mL.



Immunofluorescence of Vinculin in rat small intestine tissue with Vinculin antibody at 20 ug/mL.