

Product datasheet for **TA326659**

C20orf117 (SOGA1) Rabbit Polyclonal Antibody

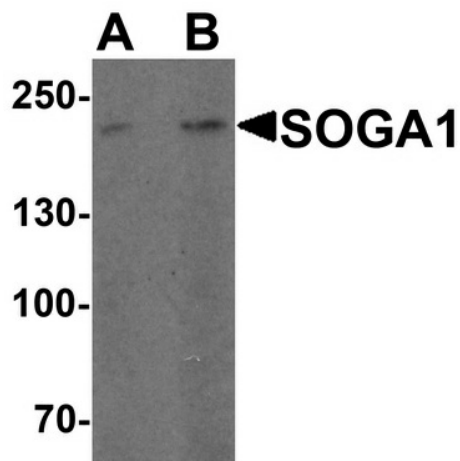
Product data:

Product Type:	Primary Antibodies
Applications:	IF, WB
Recommended Dilution:	WB: 1 - 2 ug/mL
Reactivity:	Human
Host:	Rabbit
Isotype:	IgG
Clonality:	Polyclonal
Immunogen:	SOGA1 antibody was raised against a 16 amino acid peptide near the carboxy terminus of human SOGA.
Formulation:	SOGA1 Antibody is supplied in PBS containing 0.02% sodium azide.
Concentration:	1 mg/ml
Purification:	SOGA1 Antibody is affinity chromatography purified via peptide column.
Conjugation:	Unconjugated
Storage:	Store at -20°C as received.
Stability:	Stable for 12 months from date of receipt.
Predicted Protein Size:	Predicted: 183 kDa; Observed: 200 kDa
Gene Name:	suppressor of glucose, autophagy associated 1
Database Link:	NP_954650 Entrez Gene 140710 Human O94964
Background:	The recently identified protein suppressor of glucose by autophagy protein 1 (SOGA1) has been found to be involved in the regulation of autophagy (1). SOGA1 is thought to contribute to adiponectin-mediated insulin-dependent inhibition of autophagy during the activation of adenosine monophosphate kinase (AMPK) (1,2). SOGA1 contains an internal signal peptide that enables the secretion of a circulating fragment of SOGA1, providing a surrogate marker for intracellular SOGA1 levels (2). Knockdown of SOGA1 elevated glucose production in primary hepatocytes indicates that SOGA1 is an inhibitor of glucose production. It thus might be useful as a novel therapeutic target for diabetes (3).

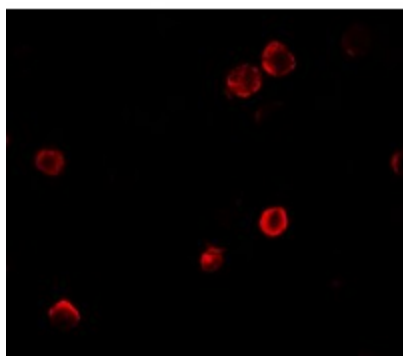

[View online »](#)

Synonyms: C20orf117; KIAA0889; SOGA

Product images:



Western blot analysis of SOGA1 in HeLa cell lysate with SOGA1 antibody at (A) 1 and (B) 2 ug/ml.



Immunofluorescence of SOGA1 in HeLa cells with SOGA1 antibody at 5 ug/mL.