

Product datasheet for **TA326657**

TMEM107 Rabbit Polyclonal Antibody

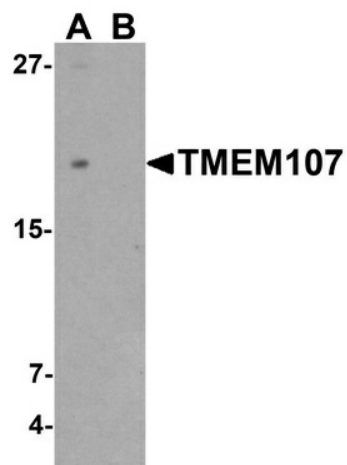
Product data:

Product Type:	Primary Antibodies
Applications:	IF, IHC, WB
Recommended Dilution:	WB: 1 - 2 ug/mL
Reactivity:	Human
Host:	Rabbit
Isotype:	IgG
Clonality:	Polyclonal
Immunogen:	TMEM107 antibody was raised against a 19 amino acid peptide near the amino terminus of human TMEM107.
Formulation:	TMEM107 Antibody is supplied in PBS containing 0.02% sodium azide.
Concentration:	1 mg/ml
Purification:	TMEM107 Antibody is affinity chromatography purified via peptide column.
Conjugation:	Unconjugated
Storage:	Store at -20°C as received.
Stability:	Stable for 12 months from date of receipt.
Predicted Protein Size:	Predicted: 16 kDa; Observed: 19 kDa
Gene Name:	transmembrane protein 107
Database Link:	NP_115730 Entrez Gene 84314 Human Q6UX40
Background:	Transmembrane protein 107 (TMEM 107) is critical for cilia formation and embryonic patterning (1). It is a 139 amino acid transmembrane protein encoded by a gene that maps to human chromosome 17 which is associated with two key tumor suppressor genes p53 and BRCA1 (1,2). TMEM107 is required for normal Sonic hedgehog (Shh) signaling in the neural tube and acts in combination with Gli2 and Gli3 to pattern ventral and intermediate neuronal cell types (1,3). TMEM107 is also a strong candidate gene for central areolar choroidal dystrophy (CACD) (1-3).
Synonyms:	GRVS638; PRO1268

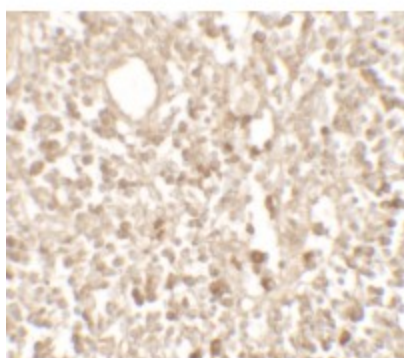


[View online »](#)

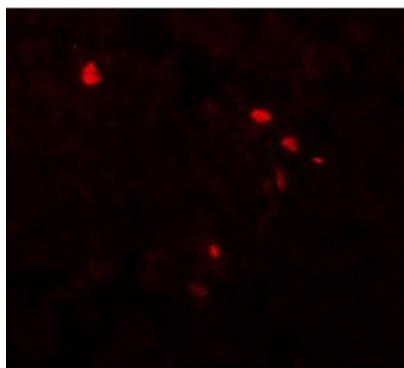
Product images:



Western blot analysis of TMEM107 in THP-1 cell lysate with TMEM107 antibody at 1 ug/ml in (A) the absence and (B) the presence of blocking peptide.



Immunohistochemistry of TMEM107 in human lymph node tissue with TMEM107 antibody at 5 ug/mL.



Immunofluorescence of TMEM107 in human lymph node tissue with TMEM107 antibody at 20 ug/mL.