

Product datasheet for **TA326656**

IL28B (IFNL3) Rabbit Polyclonal Antibody

Product data:

Product Type:	Primary Antibodies
Applications:	IF, WB
Recommended Dilution:	WB: 1 - 2 ug/mL
Reactivity:	Human
Host:	Rabbit
Isotype:	IgG
Clonality:	Polyclonal
Immunogen:	IL-28B antibody was raised against a 17 amino acid peptide near the center of human IL-28B.
Formulation:	IL-28B Antibody is supplied in PBS containing 0.02% sodium azide.
Concentration:	1 mg/ml
Purification:	IL-28B Antibody is affinity chromatography purified via peptide column.
Conjugation:	Unconjugated
Storage:	Store at -20°C as received.
Stability:	Stable for 12 months from date of receipt.
Predicted Protein Size:	Predicted: 20 kDa; Observed: 16 kDa
Gene Name:	interferon, lambda 3
Database Link:	NP_742151 Entrez Gene 282617 Human Q8IZ19
Background:	Interleukin 28 (IL-28B), also known as interferon lambda 3, is cytokine distantly related to type I interferons and the IL-10 family (1). The IL-28B gene and the closely related cytokine genes IL-28A and IL-29 form a cytokine gene cluster on a chromosomal region mapped to 19q13. Expression of the cytokines encoded by the three genes can be induced by viral infection and can induce anti-viral activity (2,3). All three cytokines have been shown to interact with a heterodimeric class II cytokine receptor that consists of interleukin 10 receptor-beta (IL10RB) and interleukin 28 receptor- alpha (IL28RA) (1).
Synonyms:	IL-28B; IL28B; IL28C

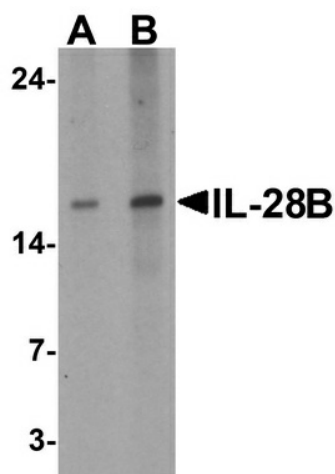


[View online »](#)

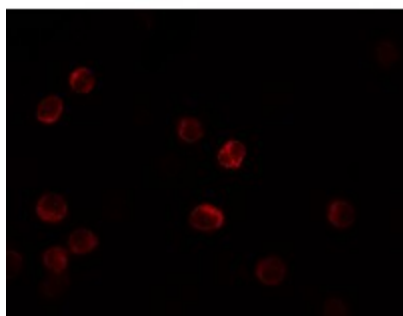
Protein Families: Druggable Genome, Secreted Protein, Transmembrane

Protein Pathways: Cytokine-cytokine receptor interaction, Jak-STAT signaling pathway

Product images:



Western blot analysis of IL-28B in HeLa cell lysate with IL-28B antibody at (A) 1 and (B) 2 ug/ml.



Immunofluorescence of IL-28B in HeLa cells with IL-28B antibody at 5 ug/mL.