

Product datasheet for **TA326655**

TBX21 Rabbit Polyclonal Antibody

Product data:

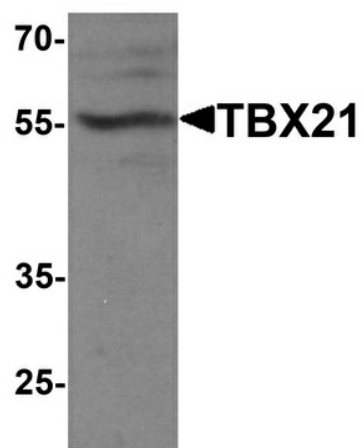
Product Type:	Primary Antibodies
Applications:	IF, WB
Recommended Dilution:	WB: 1 - 2 ug/mL
Reactivity:	Human, Mouse
Host:	Rabbit
Isotype:	IgG
Clonality:	Polyclonal
Immunogen:	TBX21 antibody was raised against a 19 amino acid peptide near the carboxy terminus of human TBX2.
Formulation:	TBX21 Antibody is supplied in PBS containing 0.02% sodium azide.
Concentration:	1 mg/ml
Purification:	TBX21 Antibody is affinity chromatography purified via peptide column.
Conjugation:	Unconjugated
Storage:	Store at -20°C as received.
Stability:	Stable for 12 months from date of receipt.
Predicted Protein Size:	Predicted: 59 kDa; Observed: 55 kDa
Gene Name:	T-box 21
Database Link:	NP_037483 Entrez Gene 57765 Mouse Entrez Gene 30009 Human Q9UL17
Background:	TBX21 is a member of a phylogenetically conserved family of genes that share a common DNA-binding domain, the T-box (1,2). Members of this family include transcription factors involved in the regulation of developmental processes (2). Studies in mouse and humans show that TBX21 is a Th1 cell-specific transcription factor that controls the expression of the hallmark Th1 cytokine, interferon-gamma (1,3). Expression of the human ortholog also correlates with interferon-gamma expression in Th1 and natural killer cells, suggesting a TBX21 may play a role in initiating Th1 lineage development from naive Th precursor cells. (3).
Synonyms:	T-bet; T-PET; TBET; TBLYM



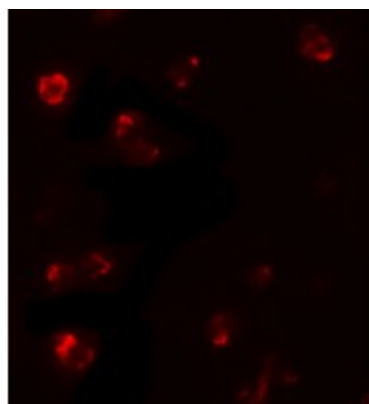
[View online »](#)

Protein Families: Druggable Genome, Transcription Factors

Product images:



Western blot analysis of TBX21 in 293 cell lysate with TBX21 antibody at 1 ug/ml.



Immunofluorescence of TBX21 in 293 cells with TBX21 antibody at 5 ug/mL.