

Product datasheet for **TA326654**

CD160 Rabbit Polyclonal Antibody

Product data:

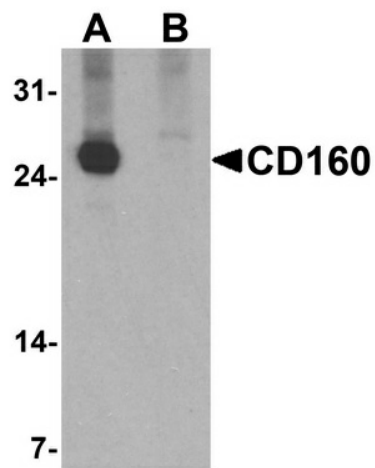
Product Type:	Primary Antibodies
Applications:	IF, WB
Recommended Dilution:	WB: 1 - 2 ug/mL
Reactivity:	Human, Mouse
Host:	Rabbit
Isotype:	IgG
Clonality:	Polyclonal
Immunogen:	CD160 antibody was raised against a 17 amino acid peptide near the center of human CD160.
Formulation:	CD160 Antibody is supplied in PBS containing 0.02% sodium azide.
Concentration:	1 mg/ml
Purification:	CD160 Antibody is affinity chromatography purified via peptide column.
Conjugation:	Unconjugated
Storage:	Store at -20°C as received.
Stability:	Stable for 12 months from date of receipt.
Predicted Protein Size:	Predicted: 20 kDa; Observed: 25 kDa
Gene Name:	CD160 molecule
Database Link:	NP_008984 Entrez Gene 54215 Mouse Entrez Gene 11126 Human O95971
Background:	CD160, also known as BY55, is a lipid-anchored cell membrane glycoprotein that contains one immunoglobulin-like domain (1). It is expressed in small intestine, spleen and functional NK and T cytotoxic lymphocytes (1,2). CD160 exists as a disulfide-linked homomultimer that functions as a receptor for MHC (major histocompatibility complex) molecules and is thought to regulate the function of NK cells (2,3). Additionally, CD160 interacts with TNFRSF14 and, via this interaction, is able to negatively regulate CD4+ T cell activation, indicating a role in immune system regulation (4).
Synonyms:	BY55; NK1; NK28



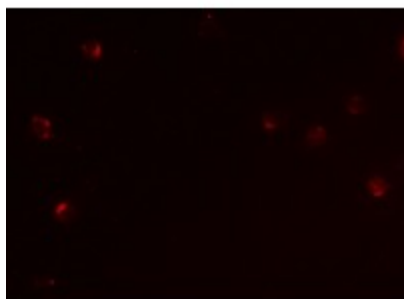
[View online »](#)

Protein Families: Druggable Genome

Product images:



Western blot analysis of CD160 in K562 cell lysate with CD160 antibody at 1 ug/ml in (A) the absence and (B) the presence of blocking peptide.



Immunofluorescence of CD160 in Jurkat cells tissue with CD160 antibody at 5 ug/mL.