

Product datasheet for **TA326653**

CD272 (BTLA) Rabbit Polyclonal Antibody

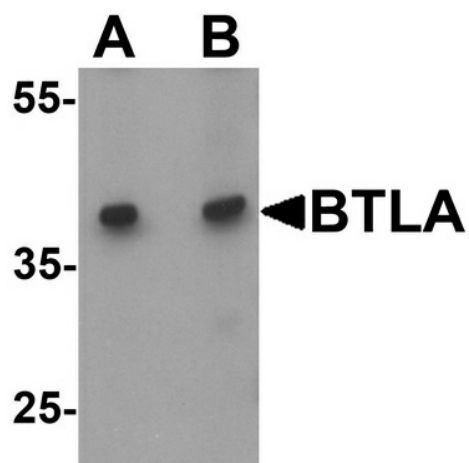
Product data:

Product Type:	Primary Antibodies
Applications:	IF, IHC, WB
Recommended Dilution:	WB: 1 - 2 ug/mL
Reactivity:	Human
Host:	Rabbit
Isotype:	IgG
Clonality:	Polyclonal
Immunogen:	BTLA antibody was raised against a 17 amino acid peptide near the center of human BTLA.
Formulation:	BTLA Antibody is supplied in PBS containing 0.02% sodium azide.
Concentration:	1 mg/ml
Purification:	BTLA Antibody is affinity chromatography purified via peptide column.
Conjugation:	Unconjugated
Storage:	Store at -20°C as received.
Stability:	Stable for 12 months from date of receipt.
Predicted Protein Size:	Predicted: 32 kDa; Observed: 40 kDa
Gene Name:	B and T lymphocyte associated
Database Link:	NP_861445 Entrez Gene 151888 Human Q7Z6A9
Background:	The B- and T-lymphocyte attenuator (BTLA) protein is a member of the immunoglobulin superfamily containing a single immunoglobulin (Ig) domain (1). Like other co-inhibitory receptors such as CTLA-4 and PD-1, BTLA functions as a receptor that relays inhibitory signals to suppress the immune response, and can inhibit LPS-induced endotoxic shock by suppressing TLR4 signaling in innate immune cells (1,2). Polymorphisms in this gene have also been associated with an increased risk of rheumatoid arthritis (3).
Synonyms:	BTLA1; CD272
Protein Families:	Transmembrane

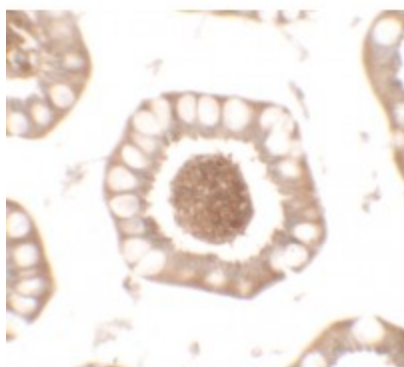


[View online »](#)

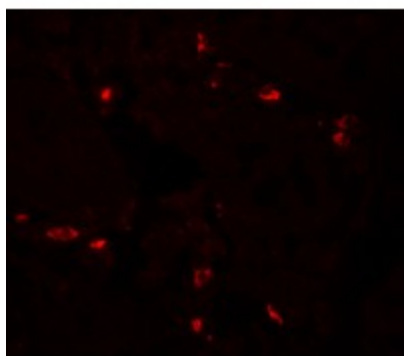
Product images:



Western blot analysis of BTLA in Jurkat cell lysate at (A) 1 and (B) 2 ug/ml.



Immunohistochemistry of BTLA in human small intestine tissue with BTLA antibody at 2.5 ug/mL.



Immunofluorescence of BTLA in human small intestine tissue with BTLA antibody at 20 ug/mL.