

Product datasheet for **TA326652**

MMP9 Rabbit Polyclonal Antibody

Product data:

Product Type:	Primary Antibodies
Applications:	IF, IHC, WB
Recommended Dilution:	WB: 1 - 2 ug/mL
Reactivity:	Human, Mouse, Rat
Host:	Rabbit
Isotype:	IgG
Clonality:	Polyclonal
Immunogen:	MMP9 antibody was raised against a 16 amino acid peptide near the center of human MMP9.
Formulation:	MMP9 Antibody is supplied in PBS containing 0.02% sodium azide.
Concentration:	1 mg/ml
Purification:	MMP9 Antibody is affinity chromatography purified via peptide column.
Conjugation:	Unconjugated
Storage:	Store at -20°C as received.
Stability:	Stable for 12 months from date of receipt.
Predicted Protein Size:	Predicted: 76 kDa; Observed: 73 kDa
Gene Name:	matrix metalloproteinase 9
Database Link:	NP_004985 Entrez Gene 17395 MouseEntrez Gene 81687 RatEntrez Gene 4318 Human P14780

Background: The matrix metalloproteinase (MMP) family are a family of proteins that are involved in the breakdown of extracellular matrix in normal physiological processes, such as embryonic development, reproduction, and tissue remodeling, as well as in disease processes, such as arthritis and metastasis. Most MMP's are secreted as inactive proproteins which are activated when cleaved by extracellular proteinases (1). MMP9 degrades type IV and V collagens (2) and studies suggest that the enzyme is involved in IL-8-induced mobilization of hematopoietic progenitor cells from bone marrow (3) and plays a role in tumor-associated tissue remodeling (4).

Synonyms: CLG4B; GELB; MANDP2; MMP-9

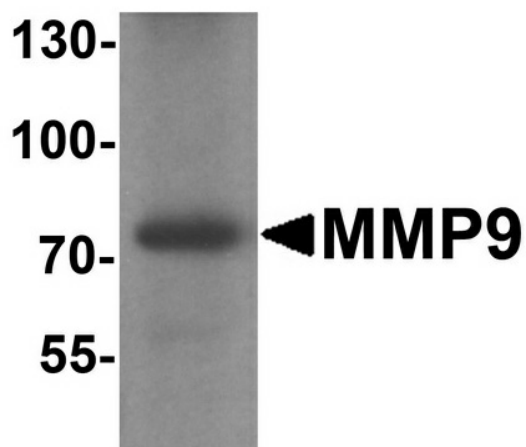


[View online »](#)

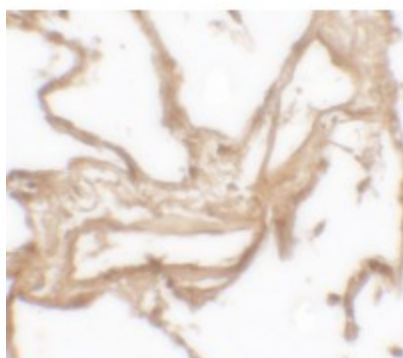
Protein Families: Druggable Genome, Protease

Protein Pathways: Bladder cancer, Leukocyte transendothelial migration, Pathways in cancer

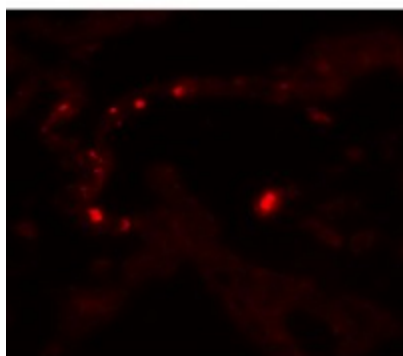
Product images:



Western blot analysis of MMP9 in mouse lung tissue lysate with MMP9 antibody at 1 ug/ml.



Immunohistochemistry of MMP9 in human lung tissue with MMP9 antibody at 2.5 ug/mL.



Immunofluorescence of MMP9 in human lung tissue with MMP9 antibody at 20 ug/mL.