

Product datasheet for **TA326649**

ARSB Rabbit Polyclonal Antibody

Product data:

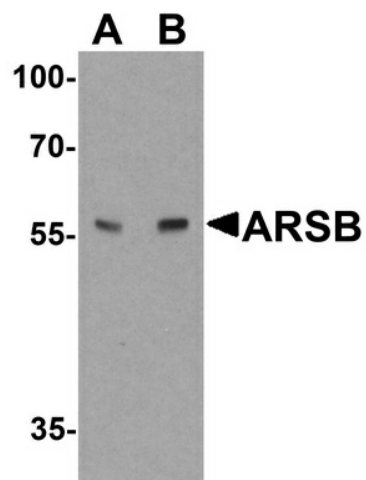
| | |
|-------------------------|--|
| Product Type: | Primary Antibodies |
| Applications: | IF, IHC, WB |
| Recommended Dilution: | WB: 1 - 2 ug/mL |
| Reactivity: | Human, Mouse, Rat |
| Host: | Rabbit |
| Isotype: | IgG |
| Clonality: | Polyclonal |
| Immunogen: | ARSB antibody was raised against a 16 amino acid peptide near the carboxy terminus of human ARSB |
| Formulation: | ARSB Antibody is supplied in PBS containing 0.02% sodium azide. |
| Concentration: | 1 mg/ml |
| Purification: | ARSB Antibody is affinity chromatography purified via peptide column. |
| Conjugation: | Unconjugated |
| Storage: | Store at -20°C as received. |
| Stability: | Stable for 12 months from date of receipt. |
| Predicted Protein Size: | Predicted: 59 kDa; Observed: 57 kDa |
| Gene Name: | arylsulfatase B |
| Database Link: | NP_000037 Entrez Gene 11881 MouseEntrez Gene 25227 RatEntrez Gene 411 Human P15848 |
| Background: | Aryl sulfatase B (ARSB) forms a homodimer that hydrolyzes sulfate groups of N-Acetyl-D-galactosamine, chondriotin sulfate, and dermatan sulfate (1). ARSB localizes to the lysozyme as well as to the extracellular matrix (2). Mucopolysaccharidosis type VI is an autosomal recessive lysosomal storage disorder resulting from a deficiency of arylsulfatase B (3), and can be treated with exogenous ARSB (4). |
| Synonyms: | ASB; G4S; MPS6 |
| Protein Families: | Druggable Genome |



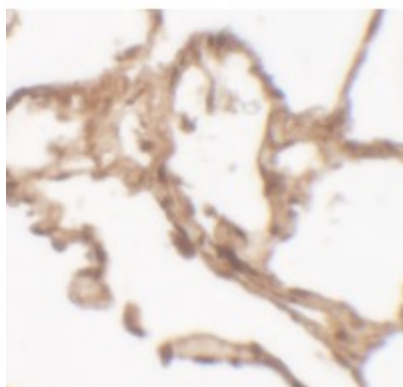
[View online »](#)

Protein Pathways: Glycosaminoglycan degradation, Lysosome, Metabolic pathways

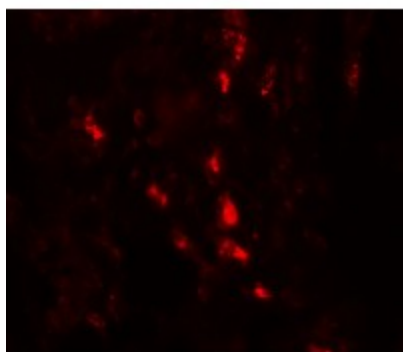
Product images:



Western blot analysis of ARSB in mouse lung tissue lysate with ARSB antibody at (A) 1 and (B) 2 ug/ml.



Immunohistochemistry of ARSB in human lung tissue with ARSB antibody at 2.5 ug/mL.



Immunofluorescence of ARSB in human lung tissue with ARSB antibody at 20 ug/mL.