

Product datasheet for **TA326647**

FHIT Rabbit Polyclonal Antibody

Product data:

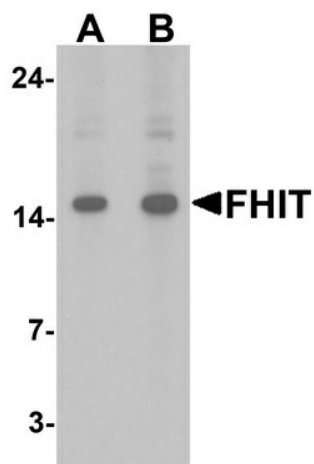
Product Type:	Primary Antibodies
Applications:	IF, WB
Recommended Dilution:	WB: 1 - 2 ug/mL
Reactivity:	Human, Mouse
Host:	Rabbit
Isotype:	IgG
Clonality:	Polyclonal
Immunogen:	FHIT antibody was raised against an 18 amino acid peptide near the carboxy terminus of human FHIT.
Formulation:	FHIT Antibody is supplied in PBS containing 0.02% sodium azide.
Concentration:	1 mg/ml
Purification:	FHIT Antibody is affinity chromatography purified via peptide column.
Conjugation:	Unconjugated
Storage:	Store at -20°C as received.
Stability:	Stable for 12 months from date of receipt.
Predicted Protein Size:	Predicted: 16 kDa; Observed: 15 kDa
Gene Name:	fragile histidine triad
Database Link:	NP_002003 Entrez Gene 14198 Mouse Entrez Gene 2272 Human P49789
Background:	FHIT is member of the histidine triad gene family and is a diadenosine involved in purine metabolism (1). FHIT is also thought to be a tumor suppressor gene and is involved in multiple apoptotic pathways (1,2). The FHIT gene encompasses the common fragile site FRA3B on chromosome 3, where carcinogen-induced damage can lead to translocations and aberrant transcripts of this gene (3). Aberrant transcripts from this gene have been found in multiple carcinomas (4).
Synonyms:	AP3Aase; FRA3B



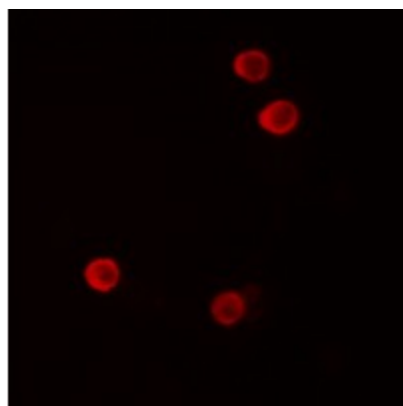
[View online »](#)

Protein Pathways: Non-small cell lung cancer, Purine metabolism, Small cell lung cancer

Product images:



Western blot analysis of FHIT in HeLa cell lysate with FHIT antibody at (A) 1 and (B) 2 ug/ml.



Immunofluorescence of FHIT in HeLa cells with FHIT antibody at 5 ug/mL.