

## Product datasheet for **TA326646**

### CEACAM5 Rabbit Polyclonal Antibody

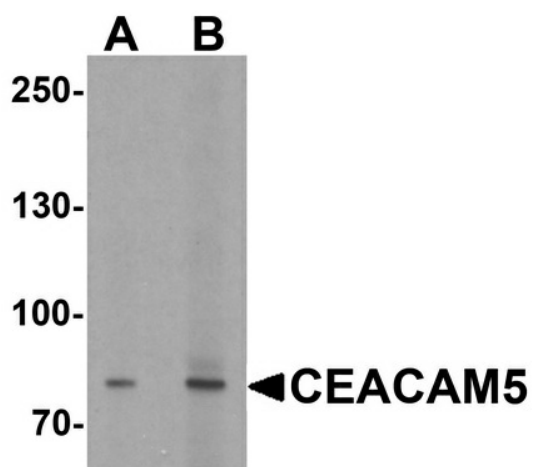
#### Product data:

Product Type:	Primary Antibodies
Applications:	IF, WB
Recommended Dilution:	WB: 1 - 2 ug/mL
Reactivity:	Human, Mouse, Rat
Host:	Rabbit
Isotype:	IgG
Clonality:	Polyclonal
Immunogen:	CEACAM5 antibody was raised against a 15 amino acid peptide near the center of human CEACAM5
Formulation:	CEACAM5 Antibody is supplied in PBS containing 0.02% sodium azide.
Concentration:	1 mg/ml
Purification:	CEACAM5 Antibody is affinity chromatography purified via peptide column.
Conjugation:	Unconjugated
Storage:	Store at -20°C as received.
Stability:	Stable for 12 months from date of receipt.
Predicted Protein Size:	Predicted: 77 kDa; Observed: 80 kDa
Gene Name:	carcinoembryonic antigen related cell adhesion molecule 5
Database Link:	<a href="#">NP_004354</a> <a href="#">Entrez Gene 73250 Mouse</a> <a href="#">Entrez Gene 1048 Human</a> <a href="#">P06731</a>
Background:	CEACAM5 is a member of the carcinoembryonic antigen (CEA) family, which belongs to the immunoglobulin superfamily (1,2). CEACAM proteins are involved in cell-cell recognition and modulate cellular processes that range from the shaping of tissue architecture and neovascularization to the regulation of insulin homeostasis and T-cell proliferation (2). CEACAM5 has been shown to be overexpressed in a majority of carcinomas and has been suggested to be a intercellular adhesion molecule involved in cancer invasion and metastasis (3).
Synonyms:	CD66e; CEA

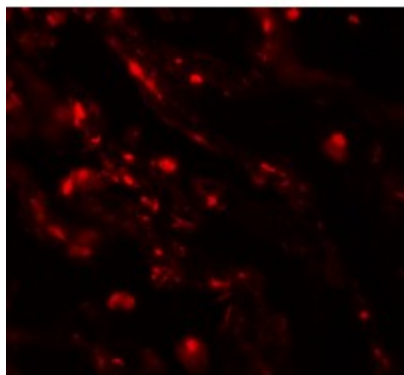


[View online »](#)

## Product images:



Western blot analysis of CEACAM5 in rat lung tissue lysate with CEACAM5 antibody at (A) 1 and (B) 2 ug/ml.



Immunofluorescence of CEACAM5 in human lung tissue with CEACAM5 antibody at 20 ug/mL.