

## Product datasheet for **TA326645**

### EMA (MUC1) Rabbit Polyclonal Antibody

#### Product data:

Product Type:	Primary Antibodies
Applications:	WB
Recommended Dilution:	WB: 1 - 2 ug/mL
Reactivity:	Human, Mouse
Host:	Rabbit
Isotype:	IgG
Clonality:	Polyclonal
Immunogen:	MUC1 antibody was raised against a 17 amino acid peptide near the carboxy terminus of human MUC1. The immunogen is located within the last 50 amino acids of MUC1 .
Formulation:	MUC1 Antibody is supplied in PBS containing 0.02% sodium azide.
Concentration:	1 mg/ml
Purification:	MUC1 Antibody is affinity chromatography purified via peptide column.
Conjugation:	Unconjugated
Storage:	Store at -20°C as received.
Stability:	Stable for 12 months from date of receipt.
Predicted Protein Size:	Predicted: 53 (+ multiple others) kDa; Observed:42
Gene Name:	mucin 1, cell surface associated
Database Link:	<a href="#">NP_001191215</a> <a href="#">Entrez Gene 4582 Human</a> <a href="#">P15941</a>



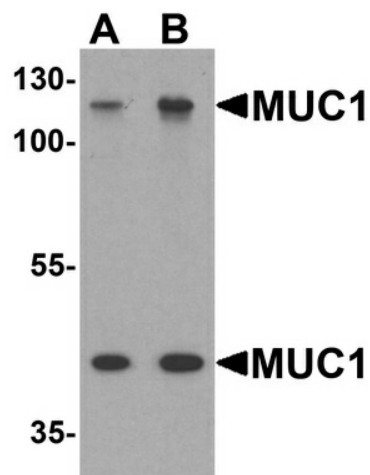
[View online »](#)

**Background:**

Mucin 1 (MUC1) is membrane-bound protein member of the mucin family. Mucins are O-glycosylated proteins that play an essential role in forming protective mucous barriers on epithelial surfaces and also play a role in intracellular signaling (1). MUC1 is expressed on the apical surface of epithelial cells that line the mucosal surfaces of many different tissues including lung, breast stomach and pancreas. MUC1 is proteolytically cleaved into alpha and beta subunits that form a heterodimeric complex. The N-terminal alpha subunit functions in cell-adhesion and the C-terminal beta subunit is involved in cell signaling. Overexpression, aberrant intracellular localization, and changes in glycosylation of this protein have been associated with carcinomas (1).

**Synonyms:**

ADMCKD; ADMCKD1; CA 15-3; CD227; EMA; H23AG; KL-6; MAM6; MCD; MCKD; MCKD1; MUC-1; SEC

**Product images:**

Western blot analysis of MUC1 in HeLa cell lysate with MUC1 antibody at (A) 1 and (B) 2 ug/ml.