

## Product datasheet for **TA326644**

### FLI1 Rabbit Polyclonal Antibody

#### Product data:

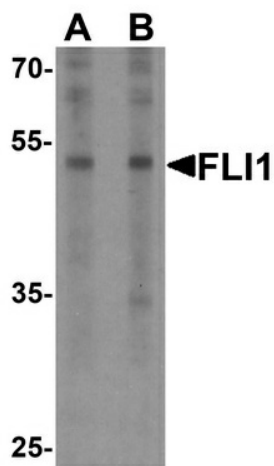
Product Type:	Primary Antibodies
Applications:	IF, WB
Recommended Dilution:	WB: 0.5 - 1 ug/mL
Reactivity:	Human, Mouse, Rat
Host:	Rabbit
Isotype:	IgG
Clonality:	Polyclonal
Immunogen:	FLI1 antibody was raised against a 17 amino acid peptide near the carboxy terminus of human FLI1. The immunogen is located within the last 50 amino acids of FLI1 .
Formulation:	FLI1 Antibody is supplied in PBS containing 0.02% sodium azide.
Concentration:	1 mg/ml
Purification:	FLI1 Antibody is affinity chromatography purified via peptide column.
Conjugation:	Unconjugated
Storage:	Store at -20°C as received.
Stability:	Stable for 12 months from date of receipt.
Predicted Protein Size:	Predicted: 50 kDa; Observed: 52 kDa
Gene Name:	Fli-1 proto-oncogene, ETS transcription factor
Database Link:	<a href="#">NP_002008</a> <a href="#">Entrez Gene 14247 MouseEntrez Gene 315532 RatEntrez Gene 2313 Human Q01543</a>
Background:	The Friend leukemia virus integration 1 (FLI1) protein is a transcription factor containing an ETS DNA-binding domain and is highly expressed in hematopoietic cell lineages and vascular endothelial cells (1). FLI1 plays important roles in megakaryocytic differentiation (2) and vascular homeostasis (3). The FLI1 gene can undergo a t(11;22)(q24;q12) translocation with the Ewing sarcoma gene on chromosome 22, which results in a fusion gene that is present in the majority of Ewing sarcoma cases. (4). Abnormal expression of FLI1 can be used as an adverse prognostic indicator for acute myeloid leukemia (5).
Synonyms:	EWSR2; SIC-1



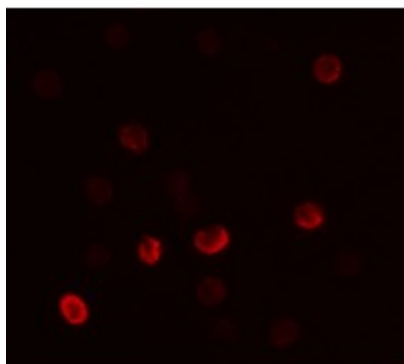
[View online »](#)

Protein Families: Transcription Factors

### Product images:



Western blot analysis of FLI1 in Jurkat cell lysate with FLI1 antibody at (A) 0.5 and (B) 1 ug/ml.



Immunofluorescence of MUC1 in HeLa cells with MUC1 antibody at 5 ug/mL.