

Product datasheet for **TA326643**

DOPA Decarboxylase (DDC) Rabbit Polyclonal Antibody

Product data:

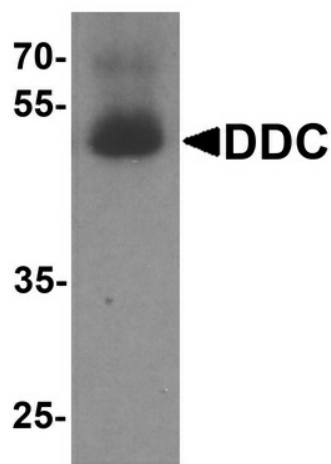
Product Type:	Primary Antibodies
Applications:	IF, IHC, WB
Recommended Dilution:	WB: 1 - 2 ug/mL
Reactivity:	Human, Mouse, Rat
Host:	Rabbit
Isotype:	IgG
Clonality:	Polyclonal
Immunogen:	DDC antibody was raised against a 14 amino acid peptide near the carboxy terminus of human DDC
Formulation:	DDC Antibody is supplied in PBS containing 0.02% sodium azide.
Concentration:	1 mg/ml
Purification:	DDC Antibody is affinity chromatography purified via peptide column.
Conjugation:	Unconjugated
Storage:	Store at -20°C as received.
Stability:	Stable for 12 months from date of receipt.
Predicted Protein Size:	Predicted: 53 kDa; Observed: 50 kDa
Gene Name:	dopa decarboxylase
Database Link:	NP_000781 Entrez Gene 13195 Mouse Entrez Gene 24311 Rat Entrez Gene 1644 Human P20711

Background: DOPA decarboxylase (DDC) belongs to the group II decarboxylase family of proteins (1). It is an important protein in the catecholamine biosynthesis pathway. DDC catalyzes the second reaction in the biosynthesis of catecholamines, trace amines and serotonin (1,2). It can form a homodimer and is expressed in the central nervous system (2). DDC can be used as markers for dopaminergic, noradrenergic and serotonergic neurons in a variety of applications including depression, schizophrenia, Parkinson's disease, neuroendocrine tumors and drug abuse (3,4). Defects in DDC gene may cause the autosomal recessive disorder AADC deficiency (4).

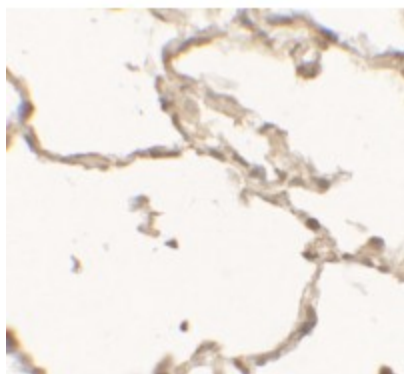


[View online »](#)

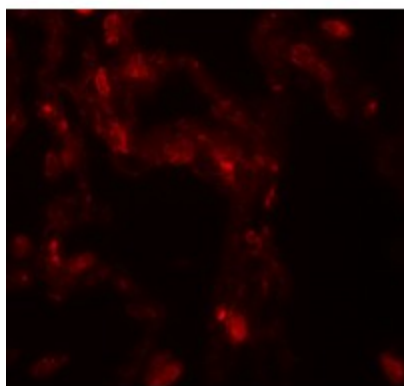
Synonyms:	AADC
Protein Families:	Druggable Genome
Protein Pathways:	Histidine metabolism, Metabolic pathways, Phenylalanine metabolism, Tryptophan metabolism, Tyrosine metabolism

Product images:

Western blot analysis of DDC in human lung tissue lysate with DDC antibody at 1 ug/ml.



Immunohistochemistry of DDC in human lung tissue with DDC antibody at 2.5 ug/mL.



Immunofluorescence of DDC in human lung tissue with DDC antibody at 20 ug/mL.