

Product datasheet for TA326642

Kallikrein 4 (KLK4) Rabbit Polyclonal Antibody

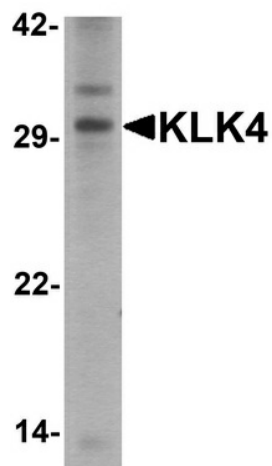
Product data:

Product Type:	Primary Antibodies
Applications:	IF, IHC, WB
Recommended Dilution:	WB: 1 - 2 ug/mL
Reactivity:	Human
Host:	Rabbit
Isotype:	IgG
Clonality:	Polyclonal
Immunogen:	KLK4 antibody was raised against a 15 amino acid peptide near the center of human KLK4.
Formulation:	KLK4 Antibody is supplied in PBS containing 0.02% sodium azide.
Concentration:	1 mg/ml
Purification:	KLK4 Antibody is affinity chromatography purified via peptide column.
Conjugation:	Unconjugated
Storage:	Store at -20°C as received.
Stability:	Stable for 12 months from date of receipt.
Predicted Protein Size:	Predicted: 28 kDa; Observed: 31 kDa
Gene Name:	kallikrein related peptidase 4
Database Link:	NP_004908 Entrez Gene 9622 Human Q9Y5K2
Background:	Kallikreins (KLKs) belong to the serine protease family of proteolytic enzymes having diverse physiological functions (1). Kallikrein 4 (KLK4), also known as prostase or EMSP1 (enamel matrix serine protease 1), contains one peptidase S1 domain and the expression in prostate is regulated by hormone (1,2). Many kallikreins are implicated in carcinogenesis and have potential as novel cancer and other disease biomarkers (3). KLK4 may have additional roles such as functioning as one of the two major enamel proteases identified that process enamel matrix proteins. Defects in KLK4 are the cause of amelogenesis imperfecta hypomaturational type 2A1 (AI2A1) (4).
Synonyms:	AI2A1; ARM1; EMSP; EMSP1; kallikrein; KLK-L1; PRSS17; PSTS

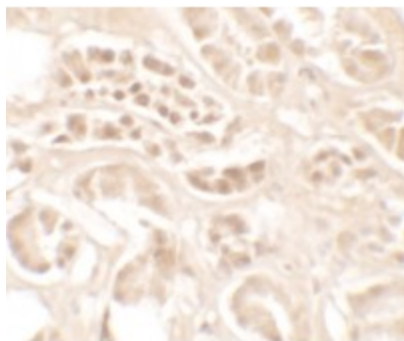

[View online »](#)

Protein Families: Druggable Genome, Secreted Protein, Transmembrane

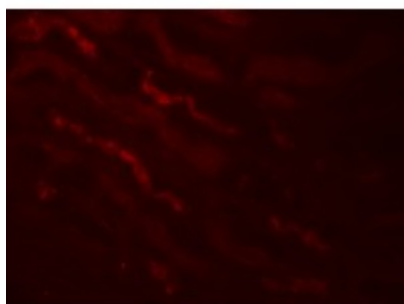
Product images:



Western blot analysis of KLK4 in human kidney tissue lysate with KLK4 antibody at 1 ug/ml.



Immunohistochemistry of KLK4 in human kidney tissue with KLK4 antibody at 5 ug/mL.



Immunofluorescence of KLK4 in human kidney tissue with KLK4 antibody at 20 ug/mL.