

Product datasheet for **TA326640**

TFPI Rabbit Polyclonal Antibody

Product data:

Product Type:	Primary Antibodies
Applications:	IF, IHC, WB
Recommended Dilution:	WB: 1 - 2 ug/mL
Reactivity:	Human, Mouse, Rat
Host:	Rabbit
Isotype:	IgG
Clonality:	Polyclonal
Immunogen:	TFPI antibody was raised against a 13 amino acid peptide near the amino terminus of human TFPI.
Formulation:	TFPI Antibody is supplied in PBS containing 0.02% sodium azide.
Concentration:	1 mg/ml
Purification:	TFPI Antibody is affinity chromatography purified via peptide column.
Conjugation:	Unconjugated
Storage:	Store at -20°C as received.
Stability:	Stable for 12 months from date of receipt.
Predicted Protein Size:	Predicted: 33 kDa; Observed: 30 kDa
Gene Name:	tissue factor pathway inhibitor
Database Link:	NP_006278 Entrez Gene 21788 MouseEntrez Gene 29436 RatEntrez Gene 7035 Human P10646

Background: TFPI Antibody: Tissue factor pathway inhibitor (TFPI), also known as lipoprotein-associated coagulation inhibitor, is a protease inhibitor that regulates the tissue factor (TF)-dependent pathway of blood coagulation (1). TFPI is glycosylated and predominantly found in the vascular endothelium and plasma in both free forms and complexed with plasma lipoproteins. The coagulation process initiates with the formation of a factor VIIa-TF complex, which proteolytically activates additional proteases (factors IX and X) and ultimately leads to the formation of a fibrin clot. TFPI inhibits the activated factor X and VIIa-TF proteases in an autoregulatory loop (1).



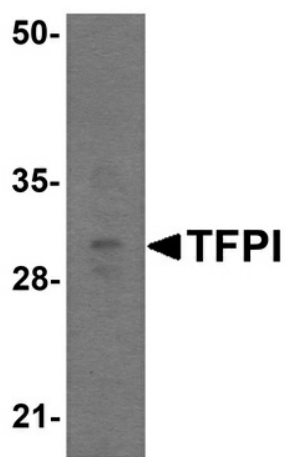
[View online »](#)

Synonyms: EPI; LACI; TFI; TFPI1

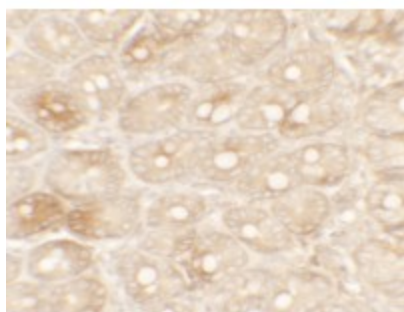
Protein Families: Secreted Protein

Protein Pathways: Complement and coagulation cascades

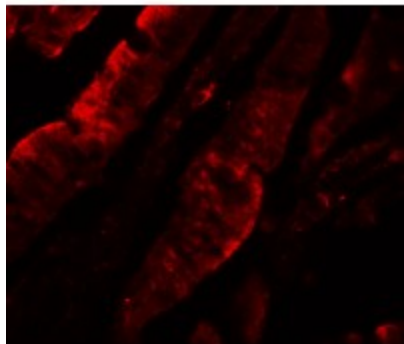
Product images:



Western blot analysis of TFPI in rat small intestine tissue lysate with TFPI antibody at 1 ug/mL.



Immunohistochemistry of TFPI in rat small intestine tissue with TFPI antibody at 5 ug/mL.



Immunofluorescence of TFPI in rat small intestine tissue with TFPI antibody at 20 ug/mL.