

## Product datasheet for **TA326639**

### **Bim (BCL2L11) Rabbit Polyclonal Antibody**

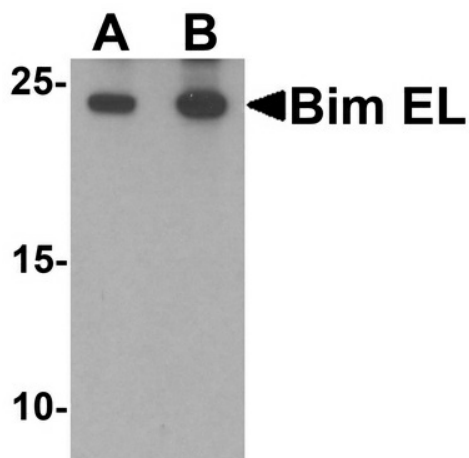
#### **Product data:**

<b>Product Type:</b>	Primary Antibodies
<b>Applications:</b>	IF, IHC, WB
<b>Recommended Dilution:</b>	WB: 1 - 2 ug/mL
<b>Reactivity:</b>	Human, Mouse, Rat
<b>Host:</b>	Rabbit
<b>Isotype:</b>	IgG
<b>Clonality:</b>	Polyclonal
<b>Immunogen:</b>	Bim EL antibody was raised against a peptide corresponding to 15 amino acids near the amino terminus of human Bim.
<b>Formulation:</b>	Bim EL Antibody is supplied in PBS containing 0.02% sodium azide.
<b>Concentration:</b>	1 mg/ml
<b>Purification:</b>	Bim EL Antibody is affinity chromatography purified via peptide column.
<b>Conjugation:</b>	Unconjugated
<b>Storage:</b>	Store at -20°C as received.
<b>Stability:</b>	Stable for 12 months from date of receipt.
<b>Predicted Protein Size:</b>	Predicted: 22 kDa; Observed: 24 kDa
<b>Gene Name:</b>	BCL2 like 11
<b>Database Link:</b>	<a href="#">NP_619527</a> <a href="#">Entrez Gene 10018 Human</a> <a href="#">O43521</a>
<b>Background:</b>	Bim EL Antibody: Members in the Bcl-2 family are critical regulators of apoptosis by either inhibiting or promoting cell death. Bcl-2 homology 3 (BH3) domain is a potent death domain. BH3 domain containing pro-apoptotic proteins, including Bad, Bax, Bid, Bik, and Hrk, form a growing subclass of the Bcl-2 family. Bim, also known as Bcl-2-like protein 11, is a pro-apoptotic member of this family and interacts with diverse members in the pro-survival Bcl-2 sub-family including Bcl-2, Bcl-xL and Bcl-w. Multiple isoforms of Bim are known to exist, with Bim EL being the longest isoform (1,2).
<b>Synonyms:</b>	BAM; BIM; BOD

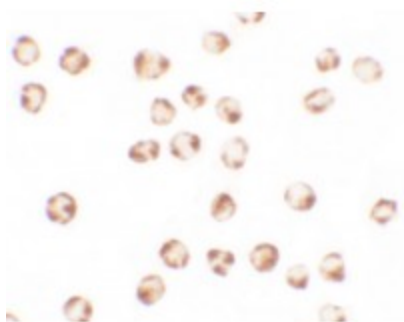


[View online »](#)

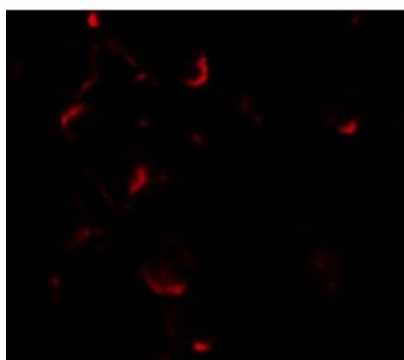
## Product images:



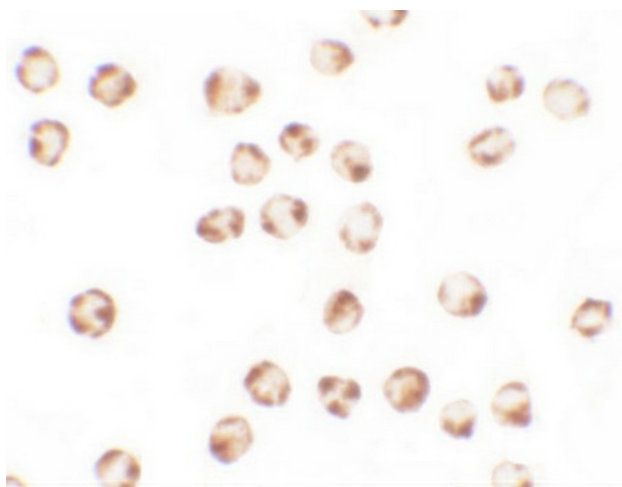
Western blot analysis of Bim in K562 cell lysate with Bim EL antibody at (A) 1 and (B) 2 ug/mL.



Immunocytochemistry of BIM EL in K562 cells with BIM EL antibody at 2.5 ug/ml.



Immunofluorescence of BIM EL in K562 cells with BIM EL antibody at 2.5 ug/ml.



Immunocytochemistry of BIM EL in K562 cells with BIM EL antibody at 2.5 ug/mL.