

Product datasheet for **TA326637**

B Raf (BRAF) Rabbit Polyclonal Antibody

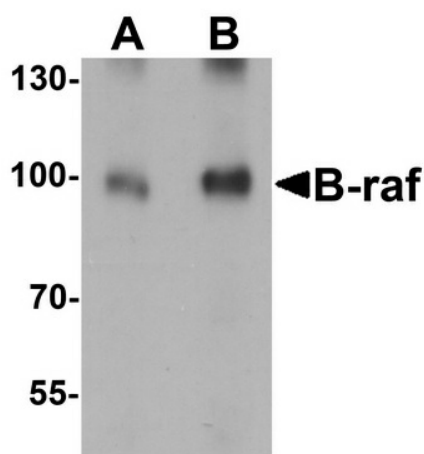
Product data:

Product Type:	Primary Antibodies
Applications:	IF, IHC, WB
Recommended Dilution:	WB: 1 - 2 ug/mL
Reactivity:	Human, Mouse, Rat
Host:	Rabbit
Isotype:	IgG
Clonality:	Polyclonal
Immunogen:	B-raf antibody was raised against a 19 amino acid peptide near the center of human B-raf.
Formulation:	B-raf Antibody is supplied in PBS containing 0.02% sodium azide.
Concentration:	1 mg/ml
Purification:	B-raf Antibody is affinity chromatography purified via peptide column.
Conjugation:	Unconjugated
Storage:	Store at -20°C as received.
Stability:	Stable for 12 months from date of receipt.
Predicted Protein Size:	Predicted: 84; Observed: 99, multiple post-transla
Gene Name:	B-Raf proto-oncogene, serine/threonine kinase
Database Link:	NP_004324 Entrez Gene 109880 MouseEntrez Gene 114486 RatEntrez Gene 673 Human P15056

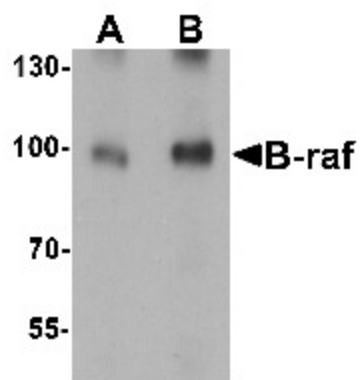


[View online »](#)

Background:	B-raf Antibody: B-raf belongs to the raf/mil family of serine/threonine protein kinases and plays a role in regulating the MAP kinase/ERKs signaling pathway, which affects cell division, differentiation, and secretion. The Ras/Raf/MEK/ERK and Ras/PI3K/PTEN/Akt pathways interact with each other to regulate growth and in some cases tumorigenesis. Mutations in B-raf have been associated with several cancers, including non-Hodgkin lymphoma, colorectal cancer, malignant melanoma, thyroid carcinoma, non-small cell lung carcinoma, and adenocarcinoma of lung, leading to speculation on the possibility of B-raf as a therapeutic target for treating cancers. Mutations in this gene have also been associated with cardiofaciocutaneous syndrome (CFCS), a disease characterized by heart defects, mental retardation and a distinctive facial appearance.
Synonyms:	B-raf; B-RAF1; BRAF1; NS7; RAFB1
Protein Families:	Druggable Genome, Protein Kinase
Protein Pathways:	Acute myeloid leukemia, Bladder cancer, Chemokine signaling pathway, Chronic myeloid leukemia, Colorectal cancer, Endometrial cancer, ErbB signaling pathway, Focal adhesion, Glioma, Insulin signaling pathway, Long-term depression, Long-term potentiation, MAPK signaling pathway, Melanoma, mTOR signaling pathway, Natural killer cell mediated cytotoxicity, Neurotrophin signaling pathway, Non-small cell lung cancer, Pancreatic cancer, Pathways in cancer, Progesterone-mediated oocyte maturation, Prostate cancer, Regulation of actin cytoskeleton, Renal cell carcinoma, Thyroid cancer, Vascular smooth muscle contraction

Product images:

Western blot analysis of B-raf in human brain tissue lysate with B-raf antibody at (A) 1 and (B) 2 ug/mL.



Immunohistochemistry of B-raf in human small intestine tissue with B-raf antibody at 2.5 ug/ml.



Immunofluorescence of B-raf in human small intestine tissue with B-raf antibody at 20 ug/ml.