

Product datasheet for **TA326631**

KCP Rabbit Polyclonal Antibody

Product data:

Product Type: Primary Antibodies

Applications: WB

Recommended Dilution: WB: 1 - 2 ug/mL

Reactivity: Human, Mouse, Rat

Host: Rabbit

Isotype: IgG

Clonality: Polyclonal

Immunogen: CRIM2 antibody was raised against a 15 amino acid synthetic peptide near the carboxy terminus of human CRIM2.

Formulation: CRIM2 Antibody is supplied in PBS containing 0.02% sodium azide.

Concentration: 1 mg/ml

Purification: CRIM2 Antibody is affinity chromatography purified via peptide column.

Conjugation: Unconjugated

Storage: Store at -20°C as received.

Stability: Stable for 12 months from date of receipt.

Gene Name: kielin/chordin-like protein

Database Link: [NP_001129386](#)

[Entrez Gene 333088 Mouse](#)[Entrez Gene 296952 Rat](#)[Entrez Gene 375616 Human](#)
[Q6ZMJ8](#)

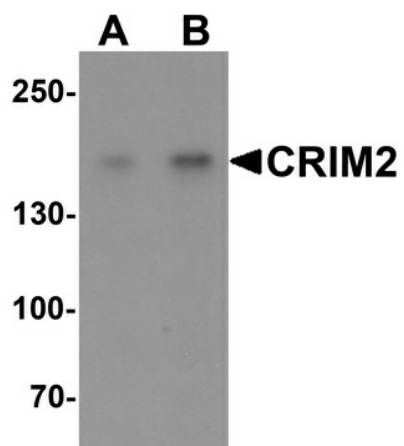
Background: CRIM2 Antibody: CRIM2, also known as Kielin/chordin-like protein (KCP), is a novel enhancer of BMP signaling. It binds to BMP7, a morphogen that is important for kidney development and part of the kidney's physiological response to repair of acute kidney injury, enhancing its binding to its receptor. Because of this, CRIM2 has been suggested as a potential antifibrotic therapy in acute and chronic kidney injury. CRIM2 can also interact directly with either activin or TGF- β 1, suppressing activin- and TGF- β 1-dependent transcription.

Synonyms: CRIM2; KCP1; NET67



[View online »](#)

Product images:



Western blot analysis of CRIM2 in Jurkat cell lysate with CRIM2 antibody at (A) 1 and (B) 2 ug/mL.