

Product datasheet for **TA326630**

ZFYVE21 Rabbit Polyclonal Antibody

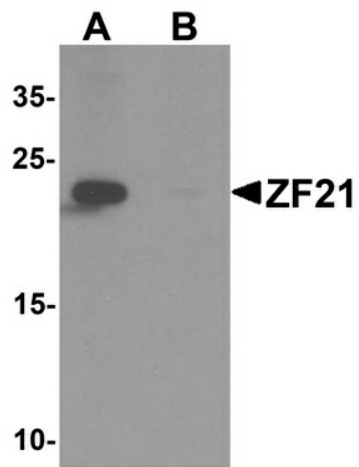
Product data:

Product Type:	Primary Antibodies
Applications:	IF, WB
Recommended Dilution:	WB: 1 ug/mL, IF: 20 ug/mL
Reactivity:	Human, Mouse, Rat
Host:	Rabbit
Isotype:	IgG
Clonality:	Polyclonal
Immunogen:	ZF21 antibody was raised against a 15 amino acid synthetic peptide near the amino terminus of human ZF21.
Formulation:	ZF21 Antibody is supplied in PBS containing 0.02% sodium azide.
Concentration:	1 mg/ml
Purification:	ZF21 Antibody is affinity chromatography purified via peptide column.
Conjugation:	Unconjugated
Storage:	Store at -20°C as received.
Stability:	Stable for 12 months from date of receipt.
Gene Name:	zinc finger FYVE-type containing 21
Database Link:	NP_001185882 Entrez Gene 79038 Human Q9BQ24
Background:	ZF21 Antibody: ZF21 was initially identified as protein that could bind to the cytoplasmic tail of MT1-MMP (Membrane-type 1 matrix metalloproteinase), a potent invasion-promoting protease. ZF21 is a member of a protein family characterized by the presence of a phosphatidylinositol 3-phosphate-binding FYVE domain and regulates focal adhesions (FAs) and cell movement. Knockdown of ZF21 expression resulted in a delay of FA disassembly following induction of synchronous disassembly of FAs by nocodazole treatment, suggesting that ZF21 is involved in FA disassembly. ZF21 contains a noncanonical pleckstrin homology domain that is a possible therapeutic target to treat metastatic cancer.
Synonyms:	HCVP7TP1; ZF21

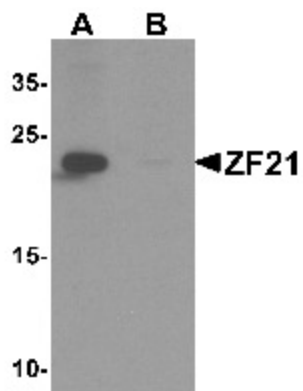


[View online »](#)

Product images:



Western blot analysis of ZF21 in 3T3 cell tissue lysate with ZF21 antibody at 1 ug/ml in (A) the absence and (B) the presence of blocking peptide.



Immunofluorescence of ZF21 in human kidney tissue with ZF21 antibody at 20 ug/mL.