

Product datasheet for **TA326628**

CASK Rabbit Polyclonal Antibody

Product data:

Product Type:	Primary Antibodies
Applications:	IF, WB
Recommended Dilution:	WB: 1 ug/mL, IF: 20 ug/mL
Reactivity:	Human, Mouse, Rat
Host:	Rabbit
Isotype:	IgG
Clonality:	Polyclonal
Immunogen:	CASK antibody was raised against a 16 amino acid synthetic peptide near the amino terminus of human CASK.
Formulation:	CASK Antibody is supplied in PBS containing 0.02% sodium azide.
Concentration:	1 mg/ml
Purification:	CASK Antibody is affinity chromatography purified via peptide column.
Conjugation:	Unconjugated
Storage:	Store at -20°C as received.
Stability:	Stable for 12 months from date of receipt.
Gene Name:	calcium/calmodulin dependent serine protein kinase
Database Link:	NP_003679 Entrez Gene 12361 Mouse Entrez Gene 29647 Rat Entrez Gene 8573 Human O14936
Background:	CASK Antibody: CASK (Calcium/calmodulin-dependent serine protein kinase), a conserved multi-domain scaffolding protein, belongs to a MAGUK (membrane-associated guanylate kinase homologs) subfamily and is involved in cell junction organization, tumor suppression and signaling. It is characterized by a novel domain structure that consists of a calcium/calmodulin-dependent protein kinase domain followed by PDZ, SH3 and guanylate kinase-like (GUK) domains. CASK is ubiquitously expressed and significantly greater in brain where it is thought to be involved in signaling at neuronal synapses. CASK interacts with CASKINs and defects in CASK are the cause of mental retardation X-linked CASK-related.
Synonyms:	CAGH39; CAMGUK; CMG; FGS4; LIN2; MICPCH; MRXSNA; TNRC8

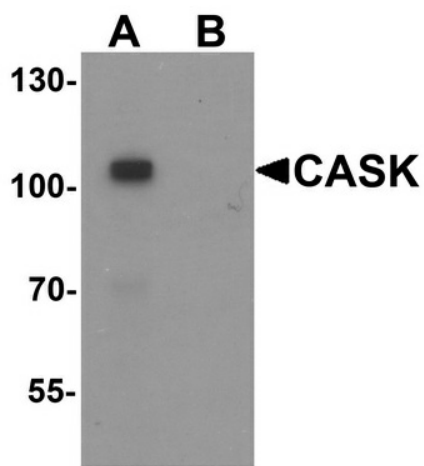


[View online »](#)

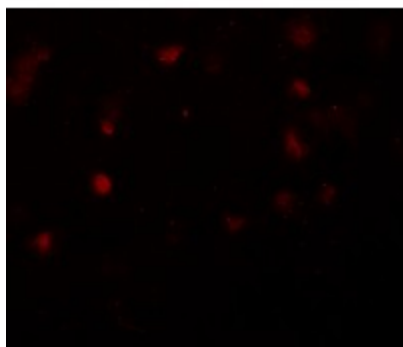
Protein Families: Druggable Genome, Protein Kinase

Protein Pathways: Tight junction

Product images:



Western blot analysis of CASK in mouse brain tissue lysate with CASK antibody at 1 ug/ml in (A) the absence and (B) the presence of blocking peptide.



Immunofluorescence of CASK in human brain tissue with CASK antibody at 20 ug/mL.