

Product datasheet for **TA326627**

DELE1 Rabbit Polyclonal Antibody

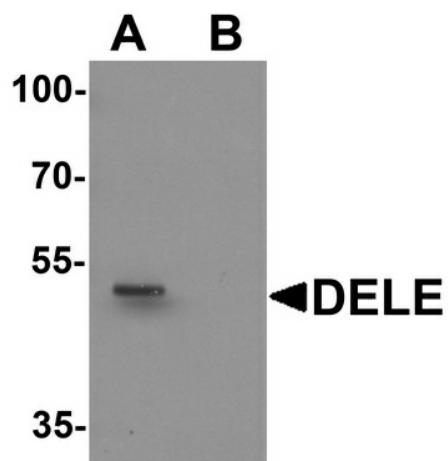
Product data:

Product Type:	Primary Antibodies
Applications:	IF, WB
Recommended Dilution:	WB: 1 ug/mL, IF: 20 ug/mL
Reactivity:	Human, Rat
Host:	Rabbit
Isotype:	IgG
Clonality:	Polyclonal
Immunogen:	DELE antibody was raised against an 18 amino acid synthetic peptide near the amino terminus of human DELE.
Formulation:	DELE Antibody is supplied in PBS containing 0.02% sodium azide.
Concentration:	1 mg/ml
Purification:	DELE Antibody is affinity chromatography purified via peptide column.
Conjugation:	Unconjugated
Storage:	Store at -20°C as received.
Stability:	Stable for 12 months from date of receipt.
Gene Name:	KIAA0141
Database Link:	NP_055588 Entrez Gene 307480 Rat Entrez Gene 9812 Human Q14154
Background:	DELE Antibody: DELE is a recently identified DAP3-binding protein that is thought to be important in the induction of death receptor-mediated apoptosis. Transfected cells that stably express DELE were found to be susceptible to apoptosis induction by TNF- α and TRAIL, whereas reducing DELE expression by siRNA rescued these cells from apoptosis induction. Furthermore, the reduction of DELE expression also inhibited the activation of caspase-3, caspase-8 and caspase-9 following stimulation by TNF- α , anti-Fas, or TRAIL, indicating the importance of DELE in apoptosis mediated by death receptors.
Synonyms:	DELE

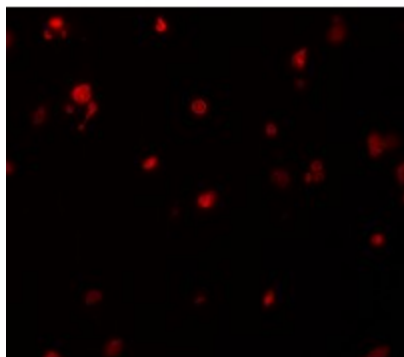


[View online »](#)

Product images:



Western blot analysis of DELE in rat brain tissue lysate with DELE antibody at 1 ug/ml in (A) the absence and (B) the presence of blocking peptide.



Immunofluorescence of DELE in human brain tissue with DELE antibody at 20 ug/mL.