

Product datasheet for **TA326624**

PTPRD Rabbit Polyclonal Antibody

Product data:

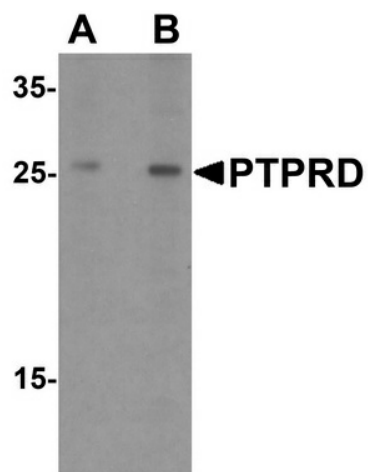
Product Type:	Primary Antibodies
Applications:	WB
Recommended Dilution:	WB: 1 - 2 ug/mL
Reactivity:	Human
Host:	Rabbit
Isotype:	IgG
Clonality:	Polyclonal
Immunogen:	PTPRD antibody was raised against an 18 amino acid synthetic peptide near the amino terminus of human PTPRD.
Formulation:	PTPRD Antibody is supplied in PBS containing 0.02% sodium azide.
Concentration:	1 mg/ml
Purification:	PTPRD Antibody is affinity chromatography purified via peptide column.
Conjugation:	Unconjugated
Storage:	Store at -20°C as received.
Stability:	Stable for 12 months from date of receipt.
Gene Name:	protein tyrosine phosphatase, receptor type D
Database Link:	NP_569075 Entrez Gene 5789 Human P23468
Background:	PTPRD Antibody: PTPRD (Protein tyrosine phosphatase receptor type D) is a member of the protein tyrosine phosphatase (PTP) family that plays diverse roles during development including cell growth, differentiation, mitotic cycle and oncogenic transformation. PTPRD contains an extracellular region, a single transmembrane segment and two tandem intracytoplasmic catalytic domains. The extracellular region of PTPRD is composed of three Ig-like and eight fibronectin type III-like domains (1,3). PTPRD interacts with PPFIA1-3 and is a tumor suppressor on chromosome 9p that is involved in the development of glioblastoma multiforme (GBMs) and multiple human cancers.
Synonyms:	HPTP; HPTPD; HPTPDELTA; PTPD; RPTPDELTA



[View online »](#)

Protein Families: Druggable Genome, Phosphatase, Transmembrane

Product images:



Western blot analysis of PTPRD in HeLa cell lysate with PTPRD antibody at (A) 1 and (B) 2 ug/mL.