

Product datasheet for **TA326623**

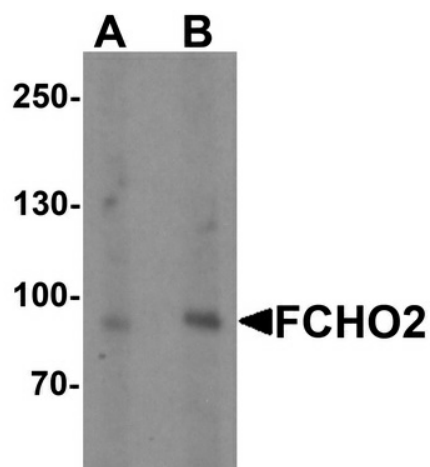
FCHO2 Rabbit Polyclonal Antibody

Product data:

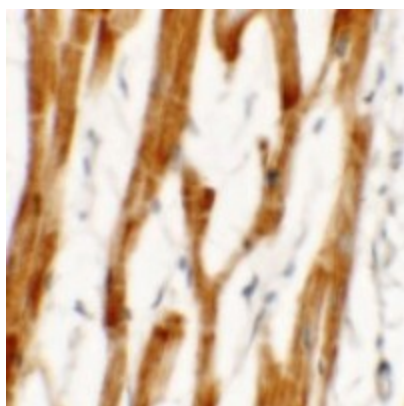
Product Type:	Primary Antibodies
Applications:	IF, IHC, WB
Recommended Dilution:	WB: 1 - 2 ug/mL, ICC: 2.5 ug/mL
Reactivity:	Human, Mouse, Rat
Host:	Rabbit
Isotype:	IgG
Clonality:	Polyclonal
Immunogen:	FCHO2 antibody was raised against a 15 amino acid synthetic peptide near the center of human FCHO2.
Formulation:	FCHO2 Antibody is supplied in PBS containing 0.02% sodium azide.
Concentration:	1 mg/ml
Purification:	FCHO2 Antibody is affinity chromatography purified via peptide column.
Conjugation:	Unconjugated
Storage:	Store at -20°C as received.
Stability:	Stable for 12 months from date of receipt.
Gene Name:	FCH domain only 2
Database Link:	NP_620137 Entrez Gene 218503 Mouse Entrez Gene 309129 Rat Entrez Gene 115548 Human Q0JZR9
Background:	FCHO2 Antibody: FCHO2 (FCH domain only 2) is a ubiquitously expressed member of the FCFBS superfamily characterized by FES-CIP4 homology (FCH) domain, an FBH domain, and an SH3 domain. Both FCHO2 and the related protein FCHO1 are mediators of clathrin-mediated endocytosis, acting to sculpt the initial bud site and recruit the clathrin machinery for clathrin-coated vesicle formation. FCHO2 binds to Eps15, an important adaptor protein in clathrin-mediated endocytosis.
Synonyms:	FCH domain only 2


[View online »](#)

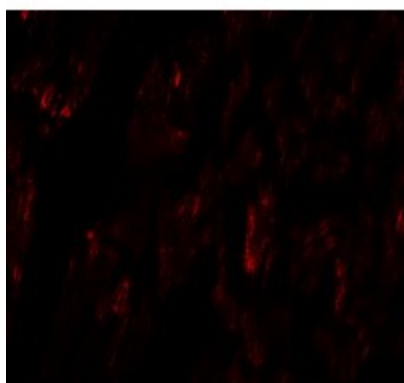
Product images:



Western blot analysis of FCHO2 in rat heart tissue lysate with FCHO2 antibody at (A) 1 and (B) 2 ug/ml



Immunohistochemistry of FCHO2 in human heart tissue with FCHO2 antibody at 2.5 ug/mL.



Immunofluorescence of FCHO2 in human heart tissue with FCHO2 antibody at 20 ug/mL.