

## Product datasheet for **TA326622**

### TGF beta receptor associated protein 1 (TGFBRAP1) Rabbit Polyclonal Antibody

#### Product data:

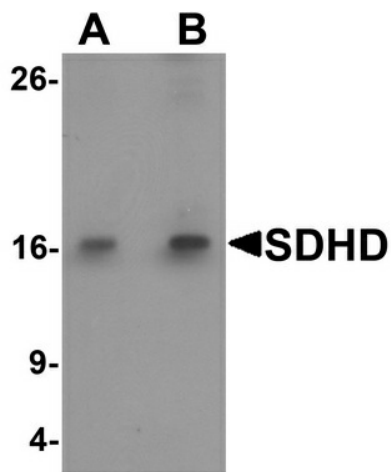
Product Type:	Primary Antibodies
Applications:	IF, IHC, WB
Recommended Dilution:	WB: 1 - 2 ug/mL
Reactivity:	Human, Mouse, Rat
Host:	Rabbit
Isotype:	IgG
Clonality:	Polyclonal
Immunogen:	SDHD antibody was raised against a 15 amino acid synthetic peptide near the center of human SDHD.
Formulation:	SDHD Antibody is supplied in PBS containing 0.02% sodium azide.
Concentration:	1 mg/ml
Purification:	SDHD Antibody is affinity chromatography purified via peptide column.
Conjugation:	Unconjugated
Storage:	Store at -20°C as received.
Stability:	Stable for 12 months from date of receipt.
Gene Name:	transforming growth factor beta receptor associated protein 1
Database Link:	<a href="#">NP_002993</a> <a href="#">Entrez Gene 9392 Human</a> <a href="#">Q14521</a>
Background:	SDHD Antibody: The mitochondrial succinate dehydrogenase complex subunit D (SDHD) is one of four proteins that make up the tricarboxylic cycle enzyme succinate dehydrogenase (SCH). Studies have shown that mutations in SDHD often leads to hereditary paragangliomas, usually benign tumors of the autonomic nervous system, suggesting that SDHD also plays a role as a tumor-suppressor gene. In one family with a nonsense mutation (R22X) in the SDHD gene, a loss of heterozygosity was found in the paragangliomas, and within these tumors the enzymatic activity of Complex II in the mitochondrial respiratory chain was completely abolished. Furthermore, high levels of angiogenic factors EPAS1 and VEGF was observed, which may stimulate tumor growth.



[View online »](#)

Synonyms: CBT1; CII-4; CWS3; cybS; PGL; PGL1; QPs3; SDH4

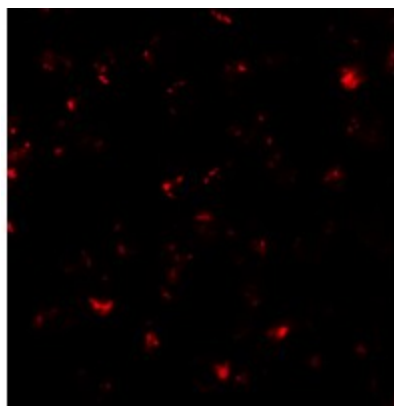
### Product images:



Western blot analysis of SDHD in EL4 cell lysate with SDHD antibody at (A) 1 and (B) 2 ug/mL.



Immunocytochemistry of SDHD in EL4 cells with SDHD antibody at 2.5 ug/mL.



Immunofluorescence of SDHD in EL4 cells with SDHD antibody at 20 ug/mL.



Immunocytochemistry of SDHD in EL4 cells with SDHD antibody at 2.5 ug/mL.