

Product datasheet for **TA326621**

p95 NBS1 (NBN) Rabbit Polyclonal Antibody

Product data:

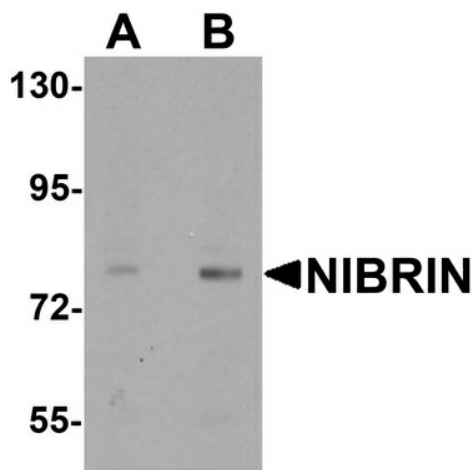
Product Type:	Primary Antibodies
Applications:	IF, IHC, WB
Recommended Dilution:	WB: 1 - 2 ug/mL, ICC: 2.5 ug/mL, IF: 5 ug/mL
Reactivity:	Human, Mouse, Rat
Host:	Rabbit
Isotype:	IgG
Clonality:	Polyclonal
Immunogen:	NIBRIN antibody was raised against a 16 amino acid synthetic peptide near the amino terminus of human NIBRIN.
Formulation:	NIBRIN Antibody is supplied in PBS containing 0.02% sodium azide.
Concentration:	1 mg/ml
Purification:	NIBRIN Antibody is affinity chromatography purified via peptide column.
Conjugation:	Unconjugated
Storage:	Store at -20°C as received.
Stability:	Stable for 12 months from date of receipt.
Gene Name:	nibrin
Database Link:	NP_002476 Entrez Gene 27354 Mouse Entrez Gene 85482 Rat Entrez Gene 4683 Human O60934
Background:	NIBRIN Antibody: NIBRIN (NBN) is a member of the double-strand break repair complex MRE11/RAD50/NBN (MRN) which is involved in DNA double-strand break repair, DNA damage-induced checkpoint activation and plays a critical role in the maintenance of chromosome integrity. NIBRIN contains two modules found in cell cycle checkpoint proteins, a forkhead-associated domain adjacent to a breast cancer carboxy-terminal domain. Mutations in this gene are associated with Nijmegen breakage syndrome and maybe the cause of cancer predisposition and aplastic anemia.
Synonyms:	AT-V1; AT-V2; ATV; NBS; NBS1; P95
Protein Families:	Druggable Genome



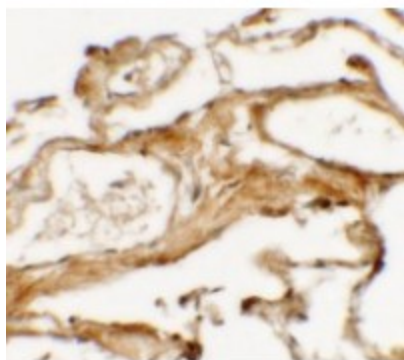
[View online »](#)

Protein Pathways: Homologous recombination

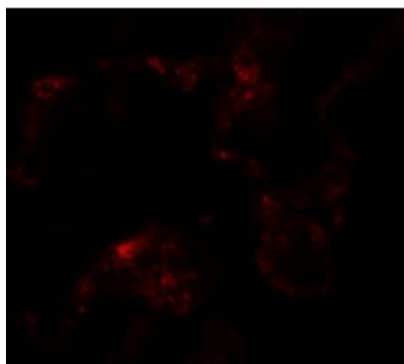
Product images:



Western blot analysis of NIBRIN in rat lung tissue lysate with NIBRIN antibody at (A) 1 and (B) 2 ug/mL.



Immunohistochemistry of NIBRIN (NT) in human lung tissue with NIBRIN (NT) antibody at 2.5 ug/mL.



Immunofluorescence of NIBRIN in human lung tissue with NIBRIN antibody at 20 ug/mL.