

## Product datasheet for **TA326619**

### WDR18 Rabbit Polyclonal Antibody

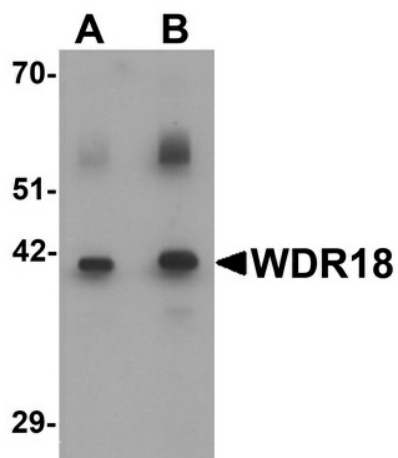
#### Product data:

Product Type:	Primary Antibodies
Applications:	IHC, WB
Recommended Dilution:	WB: 0.5 - 1 ug/mL, ICC: 2.5 ug/mL
Reactivity:	Human, Mouse, Rat
Host:	Rabbit
Isotype:	IgG
Clonality:	Polyclonal
Immunogen:	WDR18 antibody was raised against a 17 amino acid synthetic peptide near the carboxy terminus of human WDR18.
Formulation:	WDR18 Antibody is supplied in PBS containing 0.02% sodium azide.
Concentration:	1 mg/ml
Purification:	WDR18 Antibody is affinity chromatography purified via peptide column.
Conjugation:	Unconjugated
Storage:	Store at -20°C as received.
Stability:	Stable for 12 months from date of receipt.
Gene Name:	WD repeat domain 18
Database Link:	<a href="#">NP_077005</a> <a href="#">Entrez Gene 216156 Mouse</a> <a href="#">Entrez Gene 314617 Rat</a> <a href="#">Entrez Gene 57418 Human</a> <a href="#">Q9BV38</a>
Background:	WDR18 Antibody: WD repeat domain 18 (WDR18) is a member of the WD repeat protein family, which is involved in a variety of cellular processes, including cell cycle progression, signal transduction, apoptosis, and gene regulation. WD repeats are minimally conserved regions of approximately 40 amino acids that commonly form a tertiary propeller structure. WDR18 is a 432 amino acid protein that contains six WD repeats and is encoded by a gene located on human chromosome 19. WDR18 may play a role during development. The complex PELP1-TEX10-WDR18 is required for the maturation and nucleolar release of the large ribosomal subunit.
Synonyms:	Ipi3; R32184_1

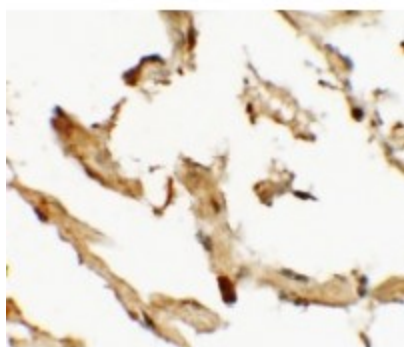


[View online »](#)

## Product images:



Western blot analysis of WDR18 in rat lung tissue lysate with WDR18 antibody at (A) 1 and (B) 2 ug/mL.



Immunohistochemistry of WDR18 in human lung tissue with WDR18 antibody at 2.5 ug/mL.