

Product datasheet for **TA326618**

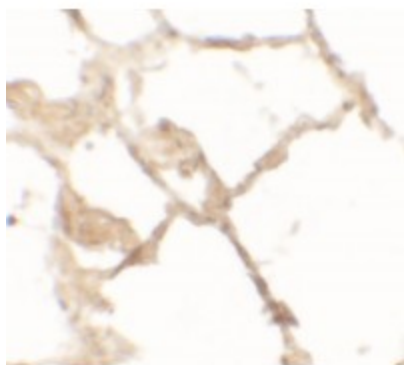
TFEB Rabbit Polyclonal Antibody

Product data:

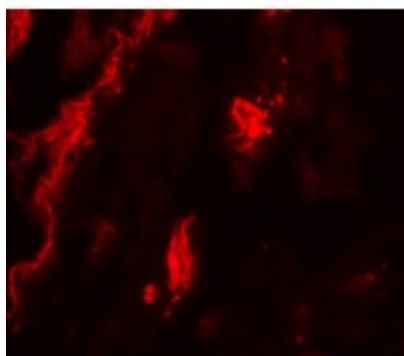
Product Type:	Primary Antibodies
Applications:	IF, IHC
Recommended Dilution:	IHC: 2.5 ug/mL
Reactivity:	Human
Host:	Rabbit
Isotype:	IgG
Clonality:	Polyclonal
Immunogen:	Rabbit polyclonal TFEB antibody was raised against a 16 amino acid peptide near the carboxy terminus of human TFEB.
Formulation:	TFEB antibody is supplied in PBS containing 0.02% sodium azide.
Concentration:	1 mg/ml
Purification:	TFEB antibody is affinity chromatography purified via peptide column.
Conjugation:	Unconjugated
Storage:	Store at -20°C as received.
Stability:	Stable for 12 months from date of receipt.
Gene Name:	transcription factor EB
Database Link:	NP_009093 Entrez Gene 7942 Human P19484
Background:	The Transcription factor EB (TFEB) is a member in the basic helix-loop-helix leucine zipper superfamily of transcription factors that is translocated in a subset of renal tumors (1,2). Recent studies have shown that lysosomal biogenesis is regulated by TFEB (3), which is in turn regulated by the mammalian target of rapamycin (mTOR) complex 1 (4). Other evidence suggests that TFEB coordinates the major steps of the autophagic pathway by driving the expression of autophagy and lysosomal genes (5).
Synonyms:	ALPHATFEB; BHLHE35; TCFEB
Protein Families:	Druggable Genome, Transcription Factors



[View online »](#)

Product images:

Immunohistochemistry of TFEB in human lung tissue with TFEB antibody at 2.5 ug/mL.



Immunofluorescence of TFEB in human lung tissue with TFEB antibody at 20 ug/mL.