

Product datasheet for **TA326617**

SLAIN1 Rabbit Polyclonal Antibody

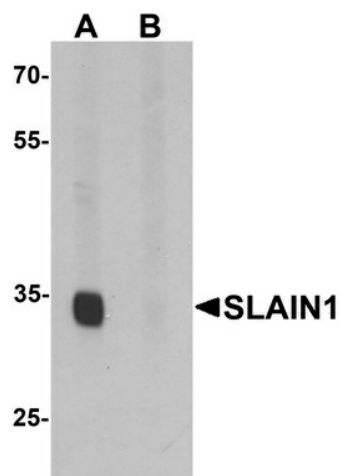
Product data:

Product Type:	Primary Antibodies
Applications:	IF, WB
Recommended Dilution:	WB: 1 ug/mL, IF: 20 ug/mL
Reactivity:	Human, Mouse, Rat
Host:	Rabbit
Isotype:	IgG
Clonality:	Polyclonal
Immunogen:	SLAIN1 antibody was raised against an 15 amino acid synthetic peptide near the carboxy terminus of human SLAIN1.
Formulation:	SLAIN1 Antibody is supplied in PBS containing 0.02% sodium azide.
Concentration:	1 mg/ml
Purification:	SLAIN1 Antibody is affinity chromatography purified via peptide column.
Conjugation:	Unconjugated
Storage:	Store at -20°C as received.
Stability:	Stable for 12 months from date of receipt.
Gene Name:	SLAIN motif family member 1
Database Link:	NP_002456 Entrez Gene 122060 Human Q8ND83
Background:	SLAIN1 Antibody: SLAIN1 is a novel stem cell protein that was identified by transcriptional profiling of mouse and human embryonic stem cells (ESCs) and is expressed at the stem cell and epiblast stages. Unlike its more widely expressed homolog SLAIN2, SLAIN1 was found to be expressed in the epiblast, nervous system, tailbud and somites of the developing mouse embryo later experiments suggested that SLAIN1 may play a role in the development of the nervous system as well as in the morphogenesis of several embryonic structures.
Synonyms:	LCCS4; MYBPCC; MYBPCS

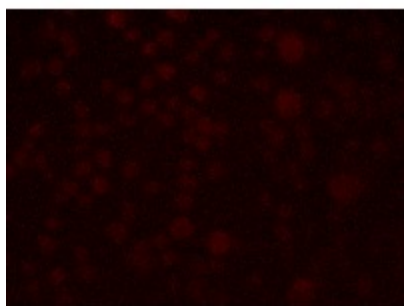


[View online »](#)

Product images:



Western blot analysis of SLAIN1 in A549 cell lysate with SLAIN1 antibody at 1 ug/mL in (A) the absence and (B) the presence of blocking peptide.



Immunofluorescence of SLAIN1 in A549 cells with SLAIN1 antibody at 2.5 ug/mL.