

## Product datasheet for **TA326616**

### KPNA5 Rabbit Polyclonal Antibody

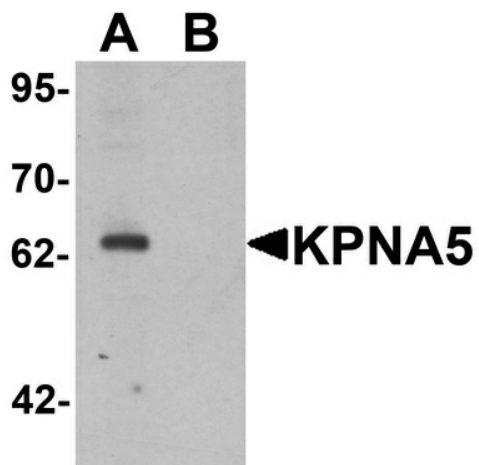
#### Product data:

Product Type:	Primary Antibodies
Applications:	IF, IHC, WB
Recommended Dilution:	WB: 1 ug/mL, ICC: 5 ug/mL, IF: 5 ug/mL
Reactivity:	Human, Mouse
Host:	Rabbit
Isotype:	IgG
Clonality:	Polyclonal
Immunogen:	KPNA5 antibody was raised against an 18 amino acid synthetic peptide near the amino terminus of human KPNA5.
Formulation:	KPNA5 Antibody is supplied in PBS containing 0.02% sodium azide.
Concentration:	1 mg/ml
Purification:	KPNA5 Antibody is affinity chromatography purified via peptide column.
Conjugation:	Unconjugated
Storage:	Store at -20°C as received.
Stability:	Stable for 12 months from date of receipt.
Gene Name:	karyopherin subunit alpha 5
Database Link:	<a href="#">NP_036448</a> <a href="#">Entrez Gene 3841 Human</a> <a href="#">Q15131</a>
Background:	KPNA5 Antibody: Karyopherin, a cytosolic and heterodimeric protein complex consisting of alpha and beta subunits, is responsible for targeting proteins with nuclear localization signals to the nuclear pore complex (NPC) by an energy requiring, Ran-dependent mechanism. The alpha subunit and imported substrate enter the nucleus and accumulate in the nucleoplasm, while the beta subunit accumulates at the NPC. KPNA5 belongs to a subfamily within the KPNA family that also includes KPNA4 and 6 and is thought to be involved in NLS-dependent protein import into the nucleus.
Synonyms:	IPOA7; KPNA7



[View online »](#)

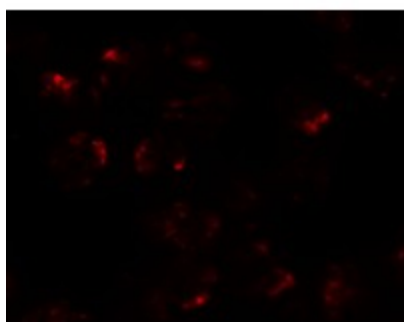
## Product images:



Western blot analysis of KPNA5 in EL4 cell lysate with KPNA5 antibody at 1 ug/mL in (A) the absence and (B) the presence of blocking peptide.



Immunocytochemistry of KPNA5 in EL4 cells with KPNA5 antibody at 5 ug/mL.



Immunofluorescence of KPNA5 in EL4 cells with KPNA5 antibody at 20 ug/mL.



Immunocytochemistry of KPNA5 in EL4 cells with KPNA5 antibody at 5 ug/mL.